

PROFINET

Safety for the future

Products 

Diagnosis 

Monitoring 

Training 

Consulting 



PROFI[®]
NET

Notes

Content

Industry 4.0 – New challenges for automation	4
Basics	6
Standards and guidelines	7
PROFINET Design Guideline and Commissioning Guideline	7
Parameters for network planning	8
PROnetplan network planning software	10
ETHERtest V5 and PROlinetest cable tester	12
PROscan® Active V2 acceptance test and validation software	13
PROFINET-INSpektor® NT analysis and diagnostic tool	17
PROFINET DiagnosticDUO (PROscan® Active V2 & PROFINET-INSpektor® NT)	21
EMCheck® LSMZ I leakage current measuring clamp	22
PROFINET Diagnostic set	22
iPNMA intelligent measuring point	23
PROmanage® NT network monitoring software	24
Configuration example (permanent network monitoring)	27
PROFINET Switches PROmesh P9 and P20	28
PROFINET Switches PROmesh FX and IP67	30
PNMA II / PNMX PROFINET measuring points	31
PROFINET services	32
Product overview	
Network planning	33
Analysis Diagnostics Measurement	33
Permanent network monitoring	35
EMC (Analysis Diagnostics Measurement)	35
Infrastructure components	35
PROFINET tools	37
Services (Measurement Training)	38



PROFINET in the context of Industry 4.0

Industry 4.0 – New challenges for automation

The 4th industrial revolution – also known as Industry 4.0 – describes a development where production companies increase the degree of networking and automation in their value creation chain so high that intelligent machines and systems can process digital product information automatically for the most part and increasingly organise processes autonomously. In this manner, even single pieces can be manufactured according to individual sizes (so-called batch size 1) within a reasonable economical range and thus open up new markets.

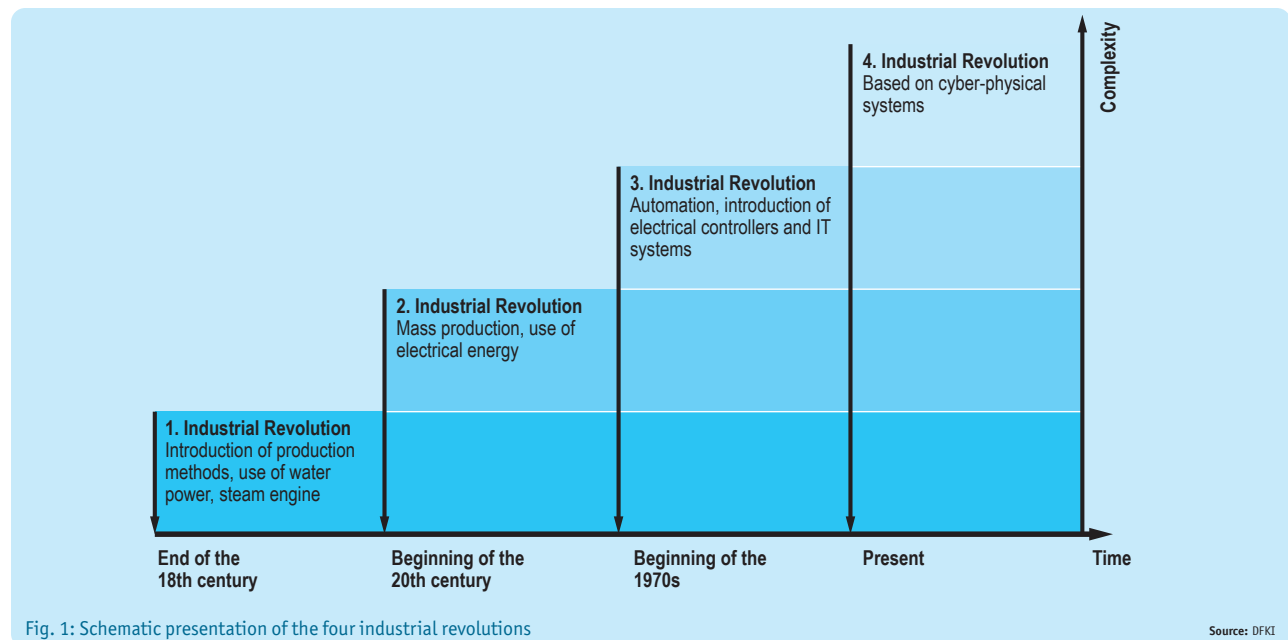


Fig. 1: Schematic presentation of the four industrial revolutions

Prof. Dr. Henning Kagermann (German Academy of Sciences), Prof. Dr. Wolf-Dieter Lukas (Federal Ministry for Education and Research) and Prof. Dr. Wolfgang Wahlster (German Research Centre for Artificial Intelligence) went public in 2011 with the “Initiative Industry 4.0” and thus coined a term that has found rapid increased use since. By establishing the “Platform Industry 4.0” (2013) for the coordination of the developments, the federal government has declared this as a topic for top management.

In practical application, it is becoming clear that Ethernet-based networks such as PROFINET will gradually replace field-bus technology and thus become the pathfinder for Industry 4.0 at the production level (operational technology, OT).

Networks, which still have a mostly local structure today, will in the future grow together from the classically hierarchic structure of the automation pyramid into a large, complex network of decentralised distributed intelligences (so-called cyber-physical systems, CPS) (see Fig. 2 and 3).

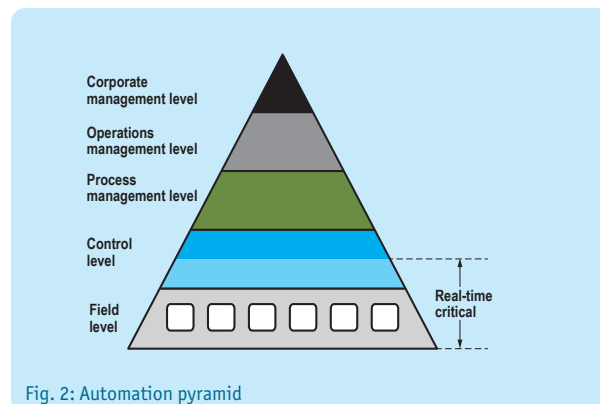


Fig. 2: Automation pyramid

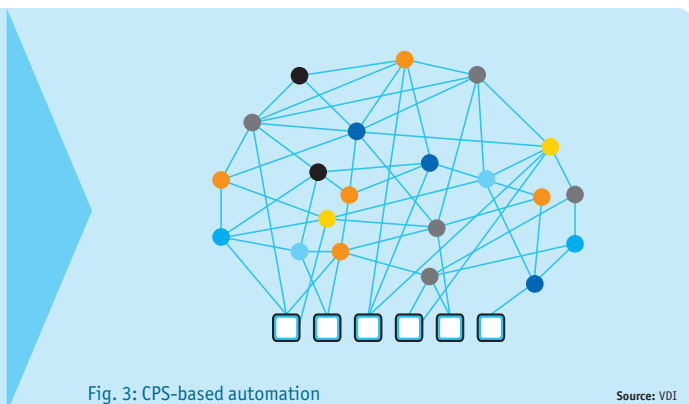


Fig. 3: CPS-based automation

Source: VDI

In the face of a vast array of solutions offered by industrial Ethernet-applications, the challenge lies in finding a common system without communications obstacles that satisfies all requirements. It is becoming clear that in the future more interest will be focussed on standard Ethernet and different, parallel existing protocols will drop away. The IEEE task force TSN (Time Sensitive Networking) was created to give real-time capability to standard Ethernet.

Security aspects are gaining importance as well (see below). Thanks to the advances of digitisation, production is increa-

singly controlled by data that is provided by intelligent sensors and devices. This data can be retrieved directly from the office level (information technology, IT), which likewise communicates via Ethernet. External (unauthorised) access is possible just as well however.

In order to understand data flows under the conditions of an increasing blending of IT and OT and to ensure security, it is becoming increasingly important to know:

Who communicated what with whom when by which means?



Security for Automation 4.0

The blending with IT however does not permit the acceptance of its security measures for the automation technology. The task for IT is rather to prevent unauthorised external access to data whereas automation technology places its focus on attacks „from inside“. Whether they are own staff or visiting service technicians – they can, possibly even unintentionally, cause quality-relevant incidences by supposedly harmless actions such as an active network scan or the loading of firmware updates.

Currently such accesses to the network cannot be regulated without endangering its availability. The correct concept by IT of shielding off to the outside for protecting the data is, however, in direct contrast to the point of view of automation technology with its idea of increasing networking of customers and producers in the

whole world. The events need to be recorded though to recognise their causes and to even notice such attacks. Today's approach by Indu-Sol is based on the log analysis by permanent network monitoring (PNM). In combination with the network monitoring software **PROmanage® NT** (see page 24), the passively operating measurement and diagnostic tool **PROFINET-INSpektor® NT** (see page 17) thereby analyses the logical data traffic in the network. Anomalies, such as unknown participants in the network or delays in the data transmission (so-called jitters, see page 8), are reported immediately.

When these quality-relevant events are recorded additionally and kept on hand, the operator knows at any time what is going on in his network.



What is PROFINET?



PROFINET - The Movie | Technology Made Easy
www.indu-sol.com/profinet-movie or use the QR code directly

Basics

PROFINET is a universal, Ethernet-based communication network that can be used in all areas of automation technology. Speedy vertical and horizontal data exchange across all levels – including the corporate control level – is the foundation for successful systems concepts.

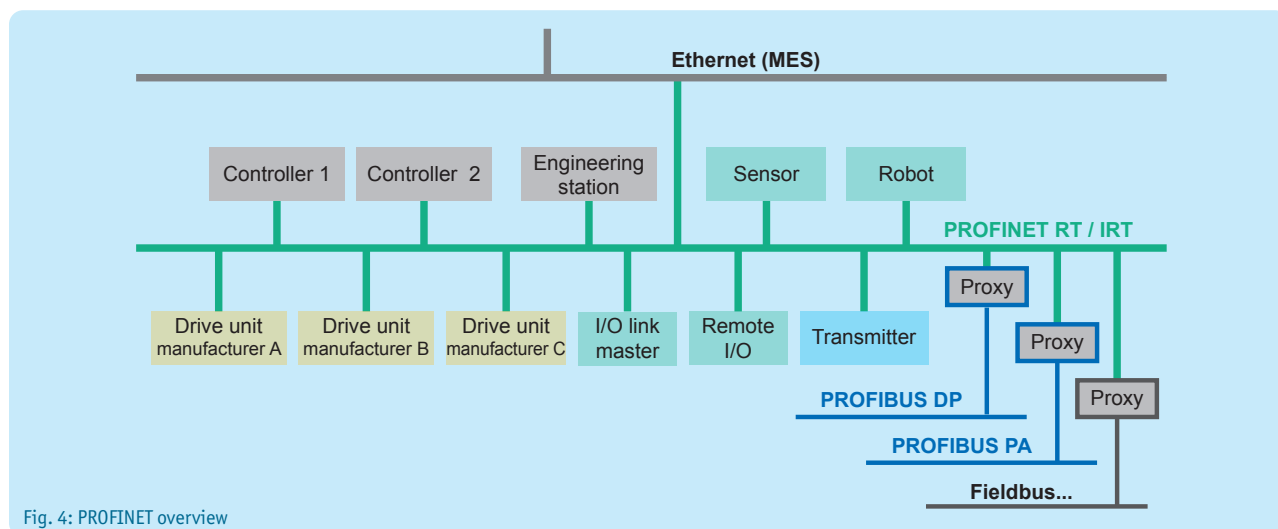


Fig. 4: PROFINET overview

Like PROFIBUS, PROFINET distinguishes between acyclical and cyclical data communication (RT – Real Time) and additionally supports fast I/O communication (IRT – Isochronous Real Time). This is done while retaining the familiar design with a cyclical transfer of peripheral data between the field devices (IO devices) and the process image in the IO controller. This results in a high degree of flexibility because update rates are scalable (see Fig. 5).

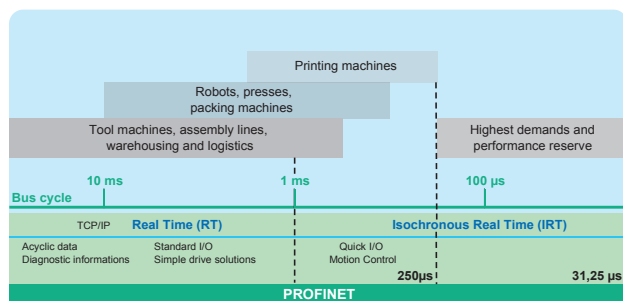


Fig. 5: Scalable bus cycle times (RT and IRT) in PROFINET

PROFINET describes a device model that is based on the principles of PROFIBUS and consists of slots and groups of IO channels (sub-slots). The technical characteristics of the field devices are described by a so-called GSD (General Station Description) that is based on XML.

Data in PROFINET networks is highly varied. Besides prioritized, cyclical PROFINET I/O data, acyclical data (e.g. TCP/IP, diagnostic messages or SNMP requests) can be transmitted (see Fig. 6).

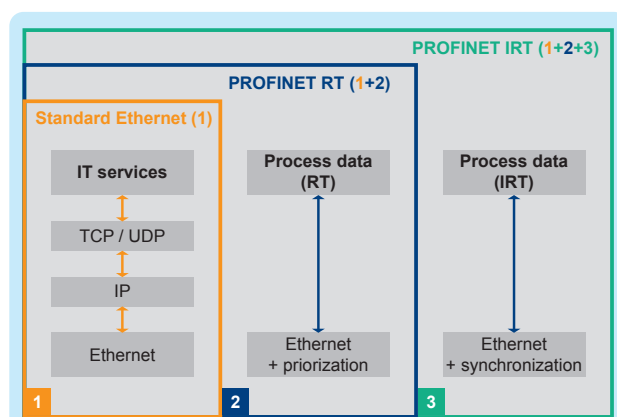


Fig. 6: Three communication channels in PROFINET

Network topologies in PROFINET derive from the requirements of the systems to be networked. The most common structures are star, line, tree and ring-shaped. In practice, systems usually are a mix of the above structures. They can be implemented either with copper or fiber-optic cables.

Standards and guidelines

Criteria for quality evaluation in the PROFINET are based on the following list of standards and guidelines as well as the experience of **Indu-Sol GmbH**. Observing them is the basis for any measurement, planning, acceptance inspection and commissioning.

- PROFINET Design Guideline - Version 1.38 – September 2019
- PROFINET Commissioning Guideline – Version 1.44 – September 2019
- PROFINET Assembly Guideline – Version 2.8 – September 2019
- PROFINET I/O Security Level 1 (netload) – Version 1.2.1.1 – February 2017
- PROFINET Conformance Classes – Version 1.1 – March 2011
- EN 50173 / ISO IEC 11801 – Structured cabling systems
- EN 50310 – Application of equipotential bonding and earthing in buildings with information technology equipment
- VDI / VDE Guideline 2184 – Reliable operation and maintenance of fieldbus systems
- Functional grounding and shielding of PROFIBUS and PROFINET – Version 1.0 – March 2018

PROFINET Design Guideline and Commissioning Guideline

The extensive options for configuration and utilization of a network necessitate careful planning and practice-oriented commissioning of the system. The user organization PROFIBUS & PROFINET International (PI) has defined quality criteria for planning, acceptance and commissioning, as well as the metrological evaluation of a network in its latest **Design and Commissioning Guideline**. It is intended as a guideline for all persons and organizations involved in the planning, installation, operation and maintenance of such systems.

In the planning stage, network utilization should be considered in addition to structure. For this purpose, it is important to know the relationships between update rate, line depth and network structure. Practical planning tools like **PRONetplan** by **Indu-Sol** can be used to display such relationships in an interactive graphic to avoid weak spots.

Moreover, it is useful to define the requirements for IO devices in advance. The categorization in Conformance Classes (CC-A, CC-B, CC-C) is a useful aid to users when selecting devices that have no more than the required functionality. Requirements include simultaneous access to devices by several controllers (IO controllers), support for media redundancy, detection of topology information in the network, device exchange without repeated use of a parameterization device, as well as applications with very short cycle times and low variation.

The selection and placement of network components in the network structure depends on the performance of the devices. It is described by the net load classes (IO Security Level 1 – see the “standards and guidelines” box).

The years of experience with fieldbus technology have shown that the extensive diagnostic options of controllers in the area of device diagnostics should be expanded by an additional measurement to verify the quality of communication. The measurements serve as dual purpose, namely a description of the PROFINET network on the one hand and ensuring operational reliability on the other. Special attention should be paid to assuring the quality of the line connections (test when plant is stopped) as well as the transmission during operation.



RECOMMENDATION

In order to ensure reliable long-term functionality of the plant, measurements to verify compliance with the quality requirements (pages 9 and 19) are urgently recommended.





Parameters for network planning

Planning the network structure

The key properties of PROFINET are a variable network structure and the unlimited combinations provided by exploiting all topological shapes of the standard Ethernet. The topology results from the following criteria:

- Spatial arrangement of the components
- Distances to be bridged
- Requirements for the use of primary infrastructure/ increased availability
- Consideration of netload (netload planning) and TCP/IP traffic
- Update rate in consideration of line depth
- Communication quality and telegram traffic
- Requirements for potential isolation/EMC

Selecting the right topology is important for the further planning of a PROFINET automation system. If required, the topology has to be adapted in a later inspection step.

Sources: PI Design Guideline (V 1.38/Sep. 19) pp. 51-56
PI Commissioning Guideline (V 1.36/Dec. 14) pp. 91/92

Update time

The update rate is the interval at which the data between the controller and IO device is updated. It can be set individually for each device in the controller (standard setting: 2 ms). In addition to considering the requirements of the process, also consider the PLC cycle time. Indu-Sol recommends setting the update time for devices to at least half the PLC cycle time. The guiding principle is **"Update only as necessary – not as much as possible."** The switching behavior of each device and the installed line depth, i.e. the number of passing devices (switches and IO devices with integrated switches) on the line, are critical for compliance with the update rate. An increasing number of passing devices prolongs the duration of the telegram. The variation of the real from the set update rate keeps increasing. It is called **"jitter"** and indicated in percent. Measurements to show compliance with the set update rates and their variation may serve as a basis for an assessment of system stability and provide an early warning of potential weak spots.

Sources: PI Design Guideline (V 1.38/Sep. 19) pp. 96-98
PI Commissioning Guideline (V 1.36/Dec. 14) p. 104

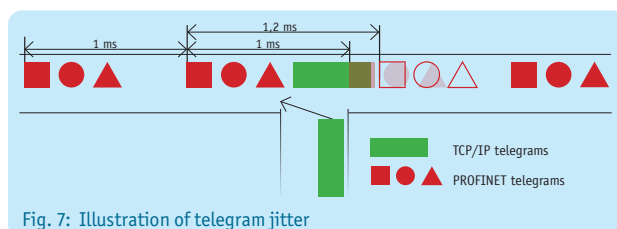


Fig. 7: Illustration of telegram jitter

Netload

The cyclical netload generated by each PROFINET device has a maximum in the connection between the controller and the first device. In order to permanently ensure the flawless functioning of the PROFINET network the following tolerances for planning and realization have to be ensured:

Netload	Recommendation
< 20%	No action required
20% ... 50%	Review of planned netload is recommended
> 50%	Take action to reduce netload

It can be seen from the practical applications that the existing netload consists of both PROFINET and TCP/IP communication. Although the PROFINET communication is generally prioritized at switches (network nodes), TCP/IP communication may sometimes jump the queue. Whether and to what extent this happens – or can happen – can be seen from the load ratio (PROFINET to TCP/IP communication). Since different netloads (peak loads) affect the compliance with update rates and devices of different netload classes are especially sensitive to peak loads demonstrating the network quality in consideration of utilization is especially important during the acceptance test or troubleshooting of a system.

Sources: PI Design Guideline (V 1.38/Sep. 19) pp. 114-117
PI Commissioning Guideline (V 1.36/Dec. 14) pp. 95/96

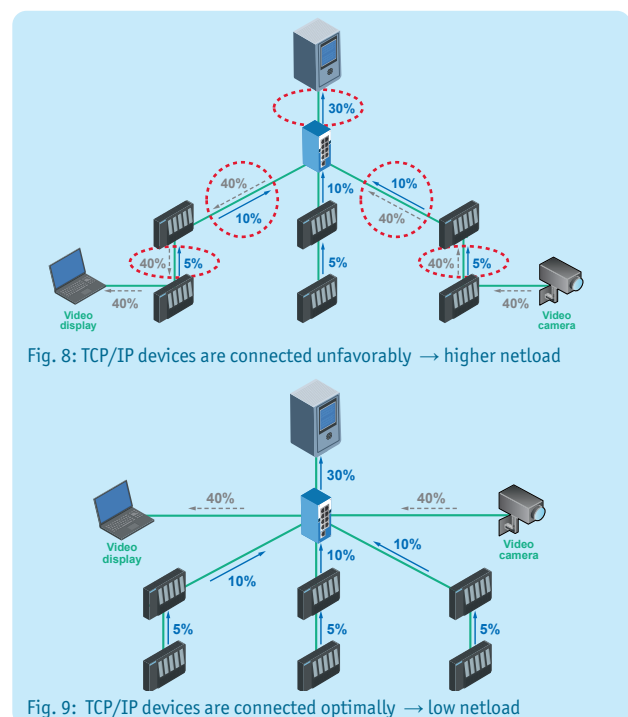
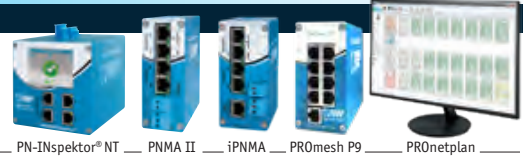


Fig. 8: TCP/IP devices are connected unfavorably → higher netload

Fig. 9: TCP/IP devices are connected optimally → low netload



Line depth

Because in PROFINET (RT) it cannot be determined whether a device (switch) is operating in store-and-forward or in cut-through mode a delay has to be expected for every passing device.

This delay has to be considered when designing a network in the planning phase. Fundamentally, the maximum line depth depends on the update time and the switch mode (see the "line depth" tables). Indu-Sol recommends observing the values from the PI guideline "Line depth for store-and-forward switches".

Source: PI Design Guideline (V 1.38/Sep. 19) pp. 110-113

Line depth for store-and-forward switches

Max. line depth for update time of			
1 ms	2 ms	4 ms	8 ms
7	14	28	58

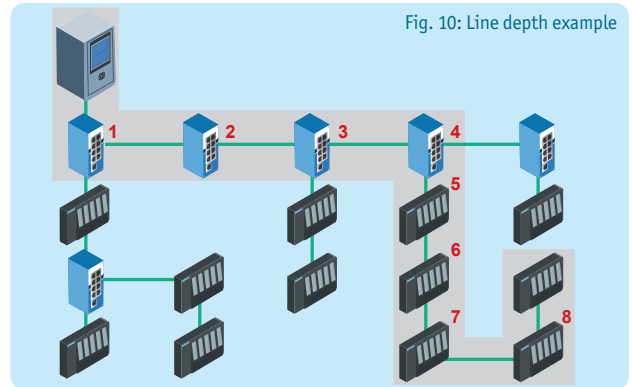


Fig. 10: Line depth example

Line depth for cut-through switches

Max. line depth for update time of			
1 ms	2 ms	4 ms	8 ms
64	100	100	100

Access points

When planning PROFINET networks the guideline recommends passive access points for network diagnostics.

Why?

- During commissioning or maintenance, to analyze the network traffic or read out devices
- To connect diagnostic devices during running operation without interruption
- For troubleshooting or long-term diagnosis/preventative maintenance of the network condition

How?

- Using passive, feedback-free TAPs (e.g. PROFINET measuring points PNMA II/PNMX – see page 31)
- Using a smart TAP (e.g. PROFINET-INspektor NT/iPNMA – see page 17, 23)

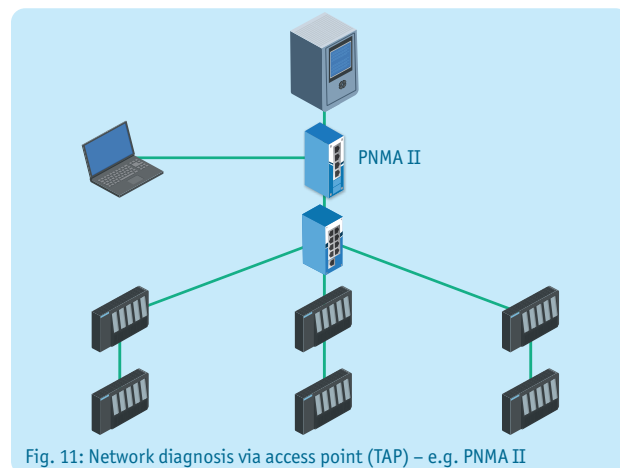


Fig. 11: Network diagnosis via access point (TAP) – e.g. PNMA II

Please note:

In principle, an initial rough analysis of the network traffic (telegram analysis) is also possible via a mirror port on the switch using analysis software (e.g. Wireshark). However, this port only delivers 100 Mbps.

But the cable carries incoming data to the controller at 100 Mbps on one wire pair and outgoing data from the controller at 100 Mbps on the other wire pair. Thus the port of the switch cannot diagnose more than one half of the data flow.

Source: PI Design Guideline (V 1.38/Sep. 19) pp. 92-93

RECOMMENDATION – Quality values

Recommendations on the quality values in PROFINET by Indu-Sol

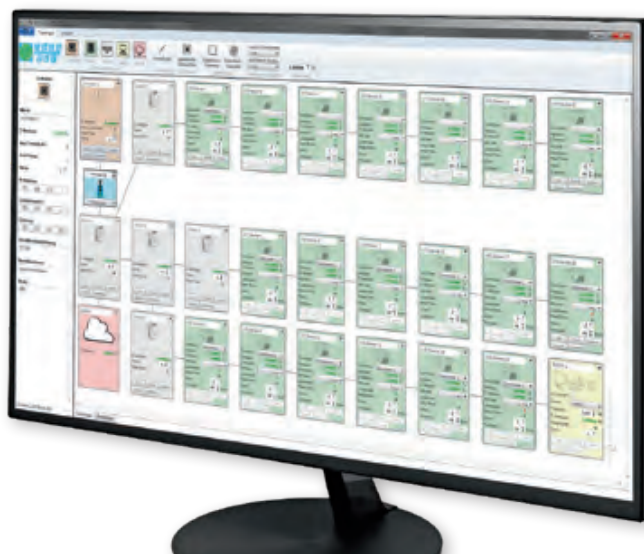
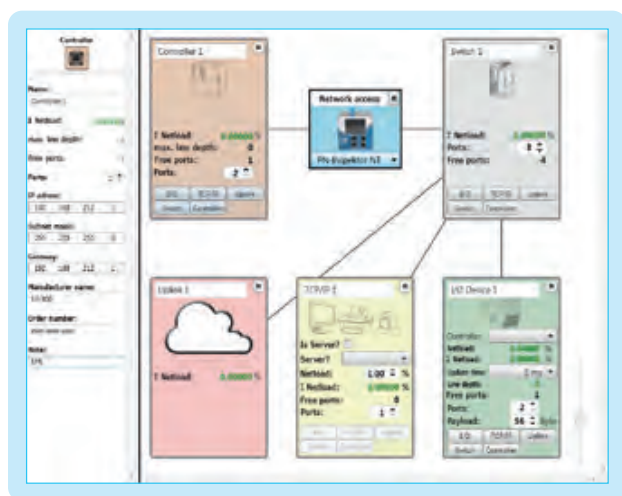
Jitter (deviation from the planned update time)	≤ 50 %
Telegram gap (missing telegram)	0
Error telegram (defective telegrams)	0
Load ratio (How heavily the network is loaded?)	100 : 1
Netload (in 100 Mbps)	< 20 %

PROnetplan network planning software

PROnetplan is a software for the preliminary planning of industrial networks. The network can be assembled intuitively on a graphic interface. Important parameters like the net load at the controller are calculated and displayed automatically based on the line depth and the preset update rate. With a simple simulation of the communication parameters or changes in the network structure, potential bottlenecks can be identified and eliminated during the planning stage. All devices and the predicted net load for each interface are listed in a clear overview. Free switch or device ports as well as the line depth are shown for each device. A special feature is the automated notification

about the impact on net load when integrating components with TCP/IP communication. As in real hardware configuration the update rate can be set uniformly for all devices or separately for each device. Security pop-ups show the locations in a network where the use of a firewall would be advisable.

In addition to network optimization, the topology created with **PROnetplan** may serve both as a platform for discussion with the customer and as a document for network installation.

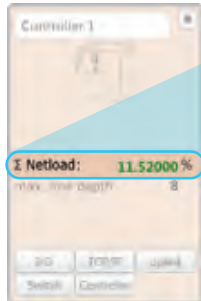


Device type	Device name	Number of ports	Free ports	Netload (Byte)	Netload generated (%)	Local netload (%)	Allocated controller
Controller	Controller 1	2	1		0	7,4	
Switch	Switch 1	8	4		0	7,4	
Switch	Switch 2	8	6		0	2,56	
Switch	Switch 3	8	5		0	4,84	
Uplink	Uplink 1	1	0		0	0	
IO Device	IO Device 1	2	0	56	0,64	2,56	Controller 1
IO Device	IO Device 2	2	0	56	0,64	1,92	Controller 1
IO Device	IO Device 3	2	0	56	0,64	1,28	Controller 1
Switch	Switch 4	8	6		0	1,92	
IO Device	IO Device 5	2	0	56	0,64	1,92	Controller 1
IO Device	IO Device 6	2	0	56	0,64	1,28	Controller 1
Switch	Switch 5	8	6		0	2,92	
IO Device	IO Device 8	2	0	56	0,64	2,92	Controller 1
IO Device	IO Device 9	2	0	56	0,64	2,28	Controller 1
IO Device	IO Device 4	2	1	56	0,64	0,64	Controller 1
IO Device	IO Device 7	2	1	56	0,64	0,64	Controller 1

Fig. 12: All devices are shown in a clear device list (including all relevant parameters)



Automatically generated detail information:



Netload

Σ Netload: 11.52000 %

PRONetplan dynamically shows the resulting load for every connection in the network. This also applies with complex network structures or networks with multiple controllers.



Update time

Update time: 1 ms

The update rate can be set uniformly for all devices or separately for each device.

Line depth

Line depth: 1

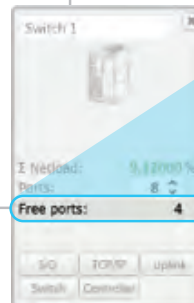
PRONetplan shows the line depth dynamically for each device. The communication partner can be assigned for every device in the network.



Network access

PNMA II

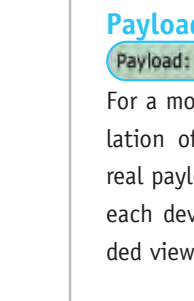
All net access devices are shown in the software and can be considered in the planning phase.



Free ports

Free ports: 4

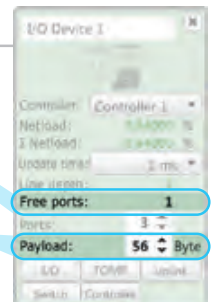
Displays remaining free ports on switches and devices.



Payload

Payload: 56 Byte

For a more accurate calculation of the netload the real payload can be set for each device in the expanded view.



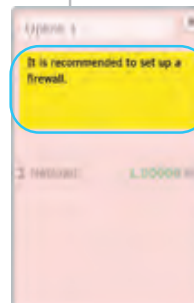
Free ports: 1

Payload: 56 Byte



Highlights

- Display of the netload for every connection in the network
- Update rate setting
- Indication of line depth for every device
- Separate netload settings for each device
- Definition of different network access devices, e.g. **PROFINET-INSpektor® NT** or the measuring points **ipNMA**, **PNMA II**, **PNMX**
- Clear device list for all devices
- Pop-ups with security information
- Display of remaining free ports on switches and devices
- Full-featured printer functionality
- PDF export with numerous functions



Security information

It is recommended to set up a firewall.

The user-friendly pop-ups with security information show immediately which devices have free ports that may need to be blocked and where the use of a firewall might be advisable.

PRONetplan in conjunction with PROscan® Active V2

The topologies scanned with the **PROscan® Active V2** analysis software (see page 13) can easily be fed into **PRONetplan**. This enables a comparison between the plan and reality. This procedure is very useful during planning an expansion or optimization of the network.

ETHERtest V5 and PROlinetest cable tester



Certification and acceptance

The **ETHERtest V5 (V5.1/V5.3)** cable tester provides for all measurements required for the acceptance and certification of network cables up to Class F_A/Category 6_A (1000 MHz). Not only line length but also attenuation, resistance, crosstalk (NEXT), delays, shielding and the proper contacts (connection schematic) are measured and evaluated. Beyond the certification of copper cables, attenuation and OTDR can be measured for single and multi-mode fiber optic cables by means of additional adapters (**ETHERtest V5.1**).

All recorded values are displayed graphically, which enables the error sources to be identified and localized with an accuracy of 10 centimeters. All measurements are stored automatically in the device and can be retrieved as measurement report using PC software.

Verification and troubleshooting

PROlinetest is an indispensable tool for all those who install or troubleshoot PROFINET systems. The device detects any wiring errors and tests the wires and wire pairs for continuity, breaks, short-circuits, cross-wiring and exceeded maximum cable lengths.

The measurement of the total cable length and the distance to the error location significantly simplifies troubleshooting. The adapter can also be used to check Drive-Clqi and M8/M12 cable systems.

Source: PI Commissioning Guideline (V 1.44 / Sep. 19) pp. 47-62



Fig. 13: ETHERtest V5

Fig. 14: PROlinetest

RECOMMENDATIONS – Evaluation based on cable length

Compliance with the limits set out, for example, ISO IEC 11801 Class D, is always evaluated over a maximum distance of 100 m by the measuring equipment, e.g. 24 dB insertion loss. This means that in case of shorter cables (e.g. 10 m), it is also only compliance with an insertion loss of 24 dB that is monitored, which

Cable length	Max. insertion loss acc. to class D for 100 MHz	Length-dependent min. insertion loss	Length-dependent recommended min. insertion loss
100 m	24 dB	0 dB	3 dB
50 m	24 dB	3 dB	6 dB
25 m	24 dB	6 dB	9 dB
12 m	24 dB	9 dB	12 dB
6 m	24 dB	12 dB	15 dB
3 m	24 dB	15 dB	18 dB
1,5 m	24 dB	18 dB	21 dB

The qualitative evaluation of **insertion loss (IL)** should be performed while taking the line length into account.

means that weak spots are not detected in advance. This is why all measuring equipment should be evaluated based on length in accordance with the tables below in regard to the reserve insertion loss and the near-end crosstalk. By assessing the reserve, this procedure is independent from the standards and limits that are used.

Cable length	Min. near-end crosstalk acc. to class D for 100 MHz	Length-dependent min. near-end crosstalk	Length-dependent recommended min. near-end crosstalk
100 m	30 dB	0 dB	3 dB
50 m	30 dB	3 dB	6 dB
25 m	30 dB	6 dB	9 dB
12 m	30 dB	9 dB	12 dB
6 m	30 dB	12 dB	15 dB
3 m	30 dB	15 dB	18 dB
1,5 m	30 dB	18 dB	21 dB

The qualitative evaluation of the **near-end crosstalk (NEXT)** should be performed while taking the line length into account.



PROscan® Active V2 acceptance test and validation software

Online analysis / topology scan

With the **PROscan® Active V2** software you can generate a detailed description of your PROFINET networks online during running production at any time. Thanks to PROFINET devices' integrated LLDP protocol (detection of neighborhood relationships) it is possible to generate a complete topology map including all designations and connections in an extremely short time, and thereby simultaneously perform an initial simple diagnosis (line interruptions, device failures etc.) during operation. Other strengths of this product include flexible options for integration into existing plants and a simple, intuitive user interface.

The software helps to efficiently organize a complex network and and, if required, perform necessary maintenance in a timely and direct manner. Its low resource requirements enable **PROscan® Active V2** to be installed on any commonly available touch panel.

Source: PI Commissioning Guideline (V 1.44 / Sep. 19) pp. 91/92

Highlights

- Easy to use
- Diagnostics mode
 - Connection statistics
 - Version statistics
 - EMC statistics
- Acceptance report
- Asset Management
- Network / device information
 - Current port assignments
 - Port operating mode
 - Port speed
 - Device version / name
 - IP- / MAC addresses
 - Software / Hardware versions
 - Error telegrams
 - Rejected telegrams (discards)
- Suitable for PROFINET and Ethernet networks



➤ **Advanced printing and export functions (PDF)** ➤ **comprehensive documentation options**

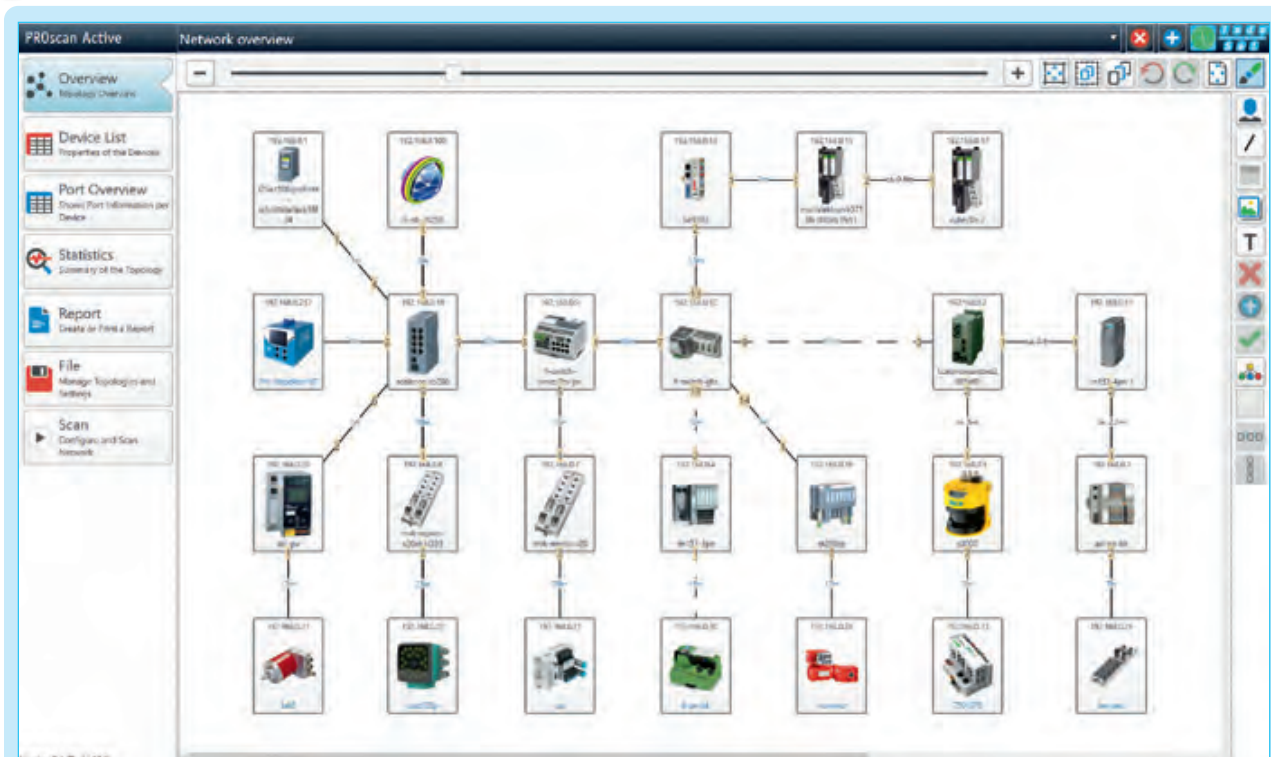


Fig. 15: PROscan® Active V2 - clear visualization of the network topology

PROscan® Active V2 acceptance test and validation software

Device list

In addition to the device information (manufacturer, ordering details), the automatically generated device list also gives a quick overview of the hardware and firmware versions of all devices used (including device extensions), allocating the

device names, IP and MAC addresses accordingly. The evaluation of this data can be exported into an acceptance-relevant log or for documentation as a CSV file at the push of a button.

Device List Properties of the Devices													
Actions	Device type	IP addresses	Subnet	Gateway	MAC address	Device name	HW version	SW version	Device type name	Order number	Controller name	RealTime Class	PROFINET Rolls
		172.20.1.51	255.255.255.0	172.20.1.51	00:1B:1B:72:7E:89	x208-cu-zeile4	6	V4.5.0	SCALANCE X-200	6GK5 208-0BA10-2AA3	controller-tafel	RTClass2	Device
		172.20.1.54	255.255.255.0	172.20.1.54	00:A0:45:68:20:F9	phoenix-switch-zeile3	5	V3.80.0	FL SWITCH SMCS 8TX-PN	2989103	controller-tafel	RTClass2	Device
		172.20.1.55	255.255.255.0	172.20.1.55	00:1B:1B:34:83:A6	x202-pof-zeile2	5	V5.0.22	SCALANCE X-200	6GK5 202-2BH00-2BA3	controller-tafel	RTClass2	Device
		172.20.1.56	255.255.255.0	172.20.1.56	00:1B:1B:1E:1B:21	et200s-pn-pof-zeile3	2	V7.0.1	IM151-3	6ES7 151-3BB23-0AB0	controller-tafel	RTClass2	Device
		172.20.1.58	255.255.255.0	172.20.1.58	00:0E:8C:D7:E3:32	x208-cu-zeile1	4	V4.5.1	SCALANCE X-200	6GK5 208-0BA10-2AA3	controller-tafel	RTClass2	Device
		172.20.1.59	255.255.255.0	172.20.1.59	00:1B:1B:24:DA:80	et200m-pn-zeile1	2	V4.0.0	IM153-4	6ES7 153-4AA01-0XB0	controller-tafel	RTClass2	Device
		172.20.1.60	255.255.255.0	172.20.1.60	00:1B:1B:3A:EC:7E	x208-cu-zeile5	6	V4.5.1	SCALANCE X-200	6GK5 208-0BA10-2AA3	controller-tafel	RTClass2	Device
		172.20.1.64	255.255.255.0	0.0.0.0	00:80:63:66:54:B0	octopus-zeile7	130	V4.2.3	Hirschmann OCTOPUS	6GK5 208-0BA10-2AA3	controller-tafel	RTClass2	Device
		172.20.1.65	255.255.255.0	172.20.1.65	00:16:77:00:8F:A1	pn-asi-gw-zeile5	2	V2.0.0	AS-I	BWU1912	controller-tafel	RTClass2	Device
Slot	Subslot	Modul ID	Submodul ID	Vendor-ID	Order number	Serial number	HW version	SW version					
1	1	0x0016001	0x0000000	42	6ES7 155-5AA00-0AC0	S C-HONX24052016	2	V3.0.1					
2	1	0x0006D20	0x0000003	42	6ES7 521-1BH00-0AB0	S C-HDMX36262016	3	V2.1.2					
3	1	0x0006D18	0x0000003	42	6ES7 522-1BH01-0AB0	S C-HDNK33432016	1	V1.0.0					
		172.20.1.71	255.255.255.0	172.20.1.71	00:90:E8:3D:1D:BD	eds-510e	100	V4.0.0	MOXA EtherDevice Switch	0054-000510-E000	controller-tafel	RTClass2	Device
		172.20.1.74	255.255.255.0	172.20.1.74	00:01:05:16:EE:87	bk9103			BK Device				Device

Port overview

In addition to the device list with all device-relevant data, a list of port relevant data for each device is also available. The overview shows both the cable lengths of copper and polymer fiber connections as well as the attenuation reserve of polymer fiber connections.

Information on error telegrams or rejected telegram packets (CRC error or discards) is important for detecting weaknesses and to perform an error analysis.

Port Overview Shows Port Information per Device									InDiscards	OutDiscards
Number	Name	Connected with	Line type	Length	Send power budget	Remote power budget	Connection			
172.20.1.200 (controller-tafel)										
2	port-002	172.20.1.55 (x202-pof-zeile2)	Copper	ca. 58,6m			100BaseTXFD	0	78	
172.20.1.54 (phoenix-switch-zeile3)										
1	port-001	172.20.1.60 (x208-cu-zeile5)	Copper	17,2m			100BaseTXFD	0	0	
2	port-002	172.20.1.51 (x208-cu-zeile4)	Copper	47,1m			100BaseTXFD	0	0	
3	port-003	172.20.1.248 (inblox)	Copper	5,0m			100BaseTXFD	0	0	
4	port-004	172.20.1.82 (ASi-INSpektor)	Copper	5,0m			100BaseTXFD	0	0	
5	port-005	172.20.1.81 („PB-INSpektor V2“)	Copper	5,0m			100BaseTXFD	0	0	
172.20.1.55 (x202-pof-zeile2)										
1	port-001	172.20.1.200 (controller-tafel)	Copper	ca. 58,6m			100BaseTXFD	0	0	
2	port-002	172.20.1.71 (eds-510e)	Copper	10,5m			100BaseTXFD	0	0	
3	port-003	172.20.1.56 (et200s-pn-pof-zeile3)	Fibre-optic Cable	20,5m	4,2 dB	10,8 dB	100BaseTXFD	0	0	
172.20.1.56 (et200s-pn-pof-zeile3)										
1	port-001	172.20.1.55 (x202-pof-zeile2)	Fibre-optic Cable	20,5m	10,8 dB	4,2 dB	100BaseTXFD	0	0	



PROscan® Active V2

Explanations (Discards/Error telegrams)

Data packets may be discarded by the switch, e.g. because of malfunctions, transmission errors or queue overflow at the switches.

PROscan® Active V2 determines the number of such discards (rejected telegram packets) and the number of defective telegrams (CRC errors) from the devices and displays them in a table. This provides clues as to potential causes of error.

During the analysis of such information special attention needs to be paid to devices in communication lines with high load, e.g. Switches of the primary infrastructure. (see Fig. 16)

Source: PI Commissioning Guideline (V 1.44 /Sep. 19) pp. 93/94

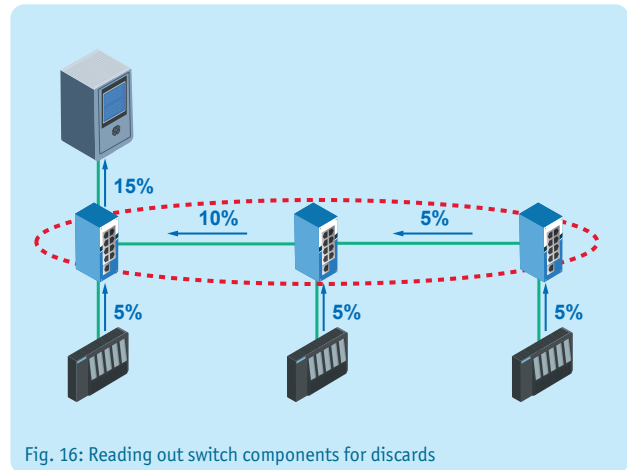



Fig. 16: Reading out switch components for discards

Checking the system reserve for optical cabling

If using polymer optical fiber (POF), the optical system reserve (power budget) of every single connection can be determined in online operation. It is a measure for the available optical power reserve between transmitter and receiver to ensure trouble-free operation. It can be read out and displayed as a diagnostic value. If the attenuation reserve of a POF connection falls below 5 dB, it is immediately apparent where transmission problems might occur.

These are represented by an exclamation mark  in the connection. This enables you to detect and remedy the weaknesses in your system at any time.

Source: PI Commissioning Guideline (V 1.44 /Sep. 19) pp. 88/89

System reserve	Evaluation
> 6 dB	The value is above the measurement range. No action required.
> 2 dB to 6 dB	<p>The value is within the valid measurement range. Trouble-free communication is ensured.</p> <p>Typical values for cabling without other plug-in connections:</p> <ul style="list-style-type: none"> • 5 dB for cable lengths up to 30 m • 3,5 dB for cable lengths from 30 m to 40 m • 2,5 dB for cable lengths from 40 m to 50 m <p>In case of deviation from the listed value ranges a cable inspection is recommended (check for additional plug-in connections, attenuation check).</p>

PROscan® Active V2

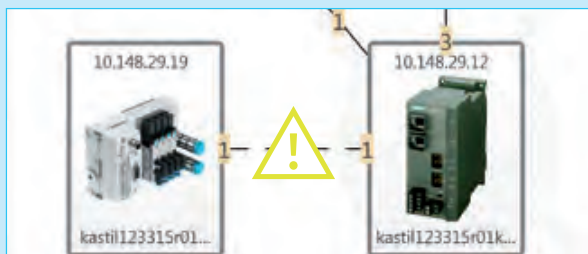
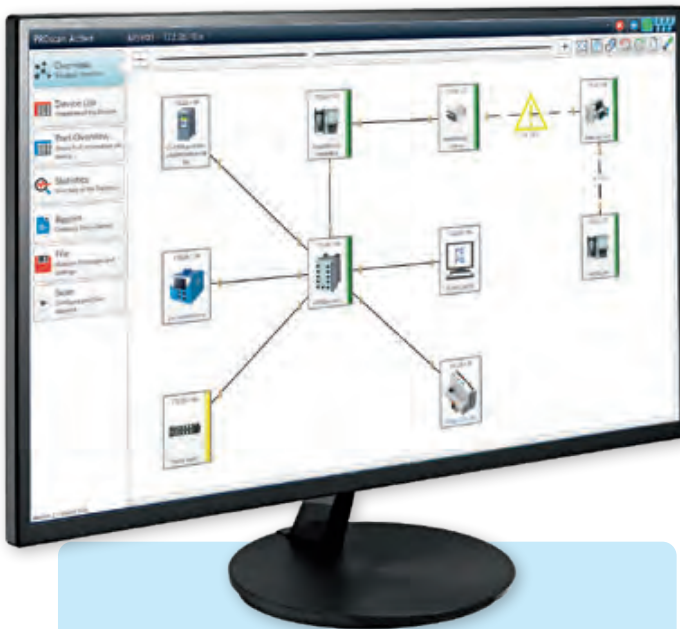


Fig. 17: Display when transmission problems occur

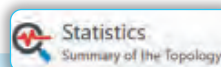


PROscan® Active V2

PROscan® Active V2 acceptance test and validation software

Diagnostics mode

An overview immediately shows the user all anomalies detected by the network scan. In the connection statistics, for example, device ports are listed with accumulated discards or error telegrams as well as a too low optical fibre system reserve. Additionally, a statistic of the software and hardware statuses of all devices (including device extensions) quickly reveals whether there are discrepancies between devices of the same type.



Main modules	Order number	SW Version	HW Version	Num. of devices
AXL BK PN-ME	2688132	V1.2.0	5	1
BNI PNT-502-102-Z015	BNI006C	V2.2.0	5	1
Cube20S	57106	V2.3.0	5	1
ET200SP	6ES7 155-6AU00-0CNO	V1.3.6	1	1
FL SWITCH GHS 4G/12	2700271	V3.1.0	4	1
FL SWITCH SMCS 8TX-PN	2989103	V2.62.0	6	1
FTS3100-A	20781104000	V4.40.0	5	1
Helmholz PN-Switch	700-850-4PS01	V2.2.2	256	1
IM151-3	6ES7 151-3BB23-0AB0	0	0	1
IM153-4	6ES7 153-4AA01-0XB0	V7.0.5	3	1
PN-INSPEKTOR NT	124030100	V3.1.0	4	1
PROscanActive	117000014	V4.0.0	2	1
S7-300	6ES7 318-3FL01-0AB0	2.0.0.218		1
SCALANCE X-200	6GK5 208-0BA10-2AA3	V3.2.6	5	1
SICK-S3000PROFIsafe	1064234	V5.1.0	6	1
WAGI-I/O-SYSTEM 75x	750-370	V5.1.3	6	1
wenglor ident	weQube	V1.11.0	0	1
		V2.5.10	4	1
		V1.1.4	100	1

Fig. 18: Version statistics

IP-Address	Device	Port	Value
Connections/Ports with IN DISCARDS			
10.1.9.5	fl-switch-ghs	port-001-00009	2
10.1.9.6	bk9103-1-1	port-001	4
10.1.9.6	bk9103-1-1	port-002	164
10.1.9.18	bnipnt502102z015-1	port-001	187206
10.1.9.18	bnipnt502102z015-1	port-002	383429
10.1.9.19	bnipnt502102z015	port-002	427308
10.1.9.21	wenglor-cam	port-001	2
10.1.9.94	iPNMA	Pa????	6
10.1.9.96	profinet-inspektor-nt	port-passive	4
10.1.9.97	PN-INSPEKTORT5	port-passive	17
Connections/Ports with IN ERRORS			
10.1.9.2	pn-io	port-002	869365
10.1.9.3	scalance-x208	port-003	874391
10.1.9.3	scalance-x208	port-005	949
10.1.9.3	scalance-x208	port-006	21172
10.1.9.4	fl-switch-smcs-8tx-pn	port-001	23
10.1.9.5	fl-switch-ghs	port-001-00009	4
10.1.9.15	im153-4pn-1	port-002	1
10.1.9.17	helmholz-pn-switch	port-001	1
10.1.9.17	helmholz-pn-switch	port-004	1
10.1.9.18	bnipnt502102z015-1	port-001	1189
10.1.9.21	wenglor-cam	port-001	3
10.1.9.62	mobmesse-x208	port-004	59
10.1.9.96	profinet-inspektor-nt	port-passive	17
10.1.9.97	PN-INSPEKTORT5	port-passive	22
Connections with too low attenuation reserve			
10.1.9.9	im151-3pn	port-001	16,4
Connections/Ports with OUT DISCARDS			
10.1.9.17	helmholz-pn-switch	port-001	60
10.1.9.17	helmholz-pn-switch	port-003	49
10.1.9.17	helmholz-pn-switch	port-004	330474
10.1.9.21	wenglor-cam	port-001	5
Connections/Ports with OUT ERRORS			
10.1.9.21	wenglor-cam	port-001	6

Fig. 19: Connection statistics

Acceptance log

PROscan® Active V2 is able to create a complete acceptance log with only a few clicks.

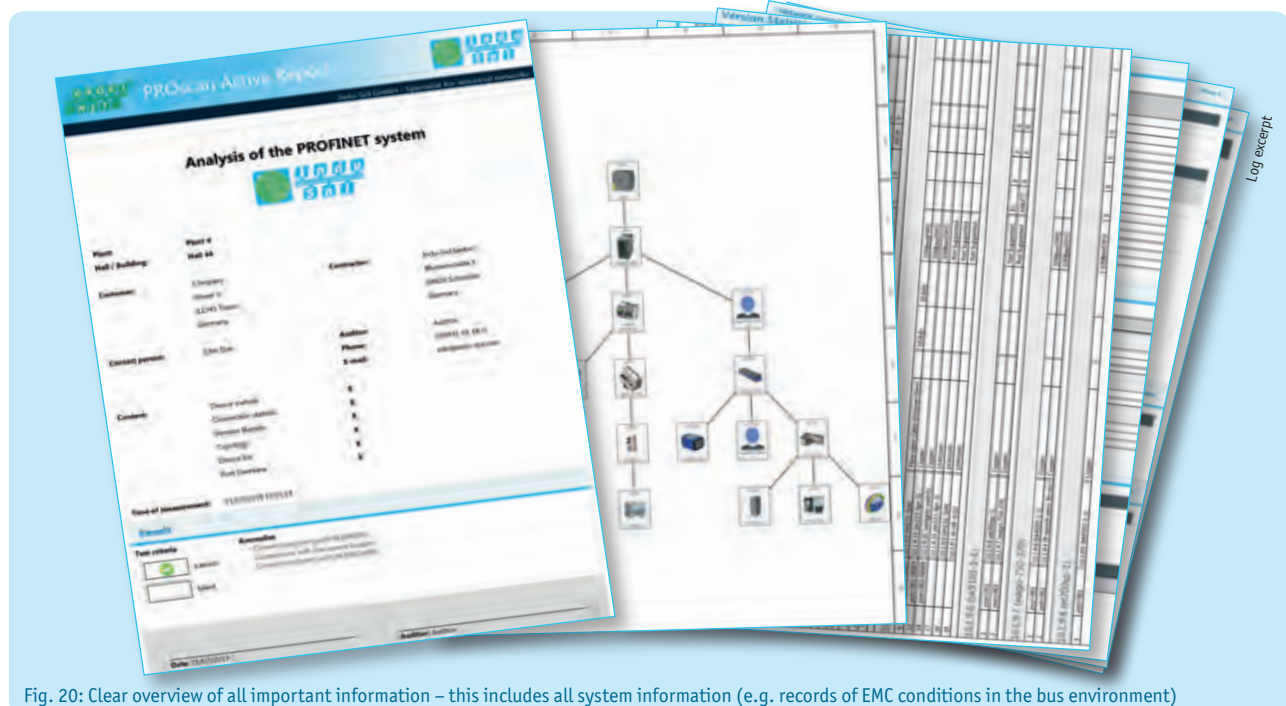


Fig. 20: Clear overview of all important information – this includes all system information (e.g. records of EMC conditions in the bus environment)



PROFINET-INSpektor® NT analysis and diagnostic tool

The **PROFINET-INSpektor® NT** is an intelligent, passive measurement and diagnostic tool for temporary or permanent monitoring of PROFINET networks. Due to its passive and feedback-free behavior it is highly suitable for online analysis.

The **PROFINET-INSpektor® NT** is both a full-featured measuring device for network acceptance and a tool for condition monitoring.

Highlights

- Ease of use, well-structured handling
- Automated evaluation through traffic light function
- Passive, feedback-free diagnostics
- Cyclical topology detection
- OPC UA Server



- Alarms in case of unknown devices
- Network anomaly detection
- Detection of programming accesses to the PLC

Network parameters – Quality parameters

User-friendly display of network conditions with traffic light colors and time graphs enable any user to respond quickly in an emergency and ensure a good general overview.

All subsequently listed quality parameters are detected as events, evaluated, cached and displayed in a clear overview.

- Telegram gaps
- Telegram jitter
- Telegram overtakes
- Error telegrams
- Update times
- Network load
- Load ratio
- Device diagnoses
- Device failures
- Device restarts

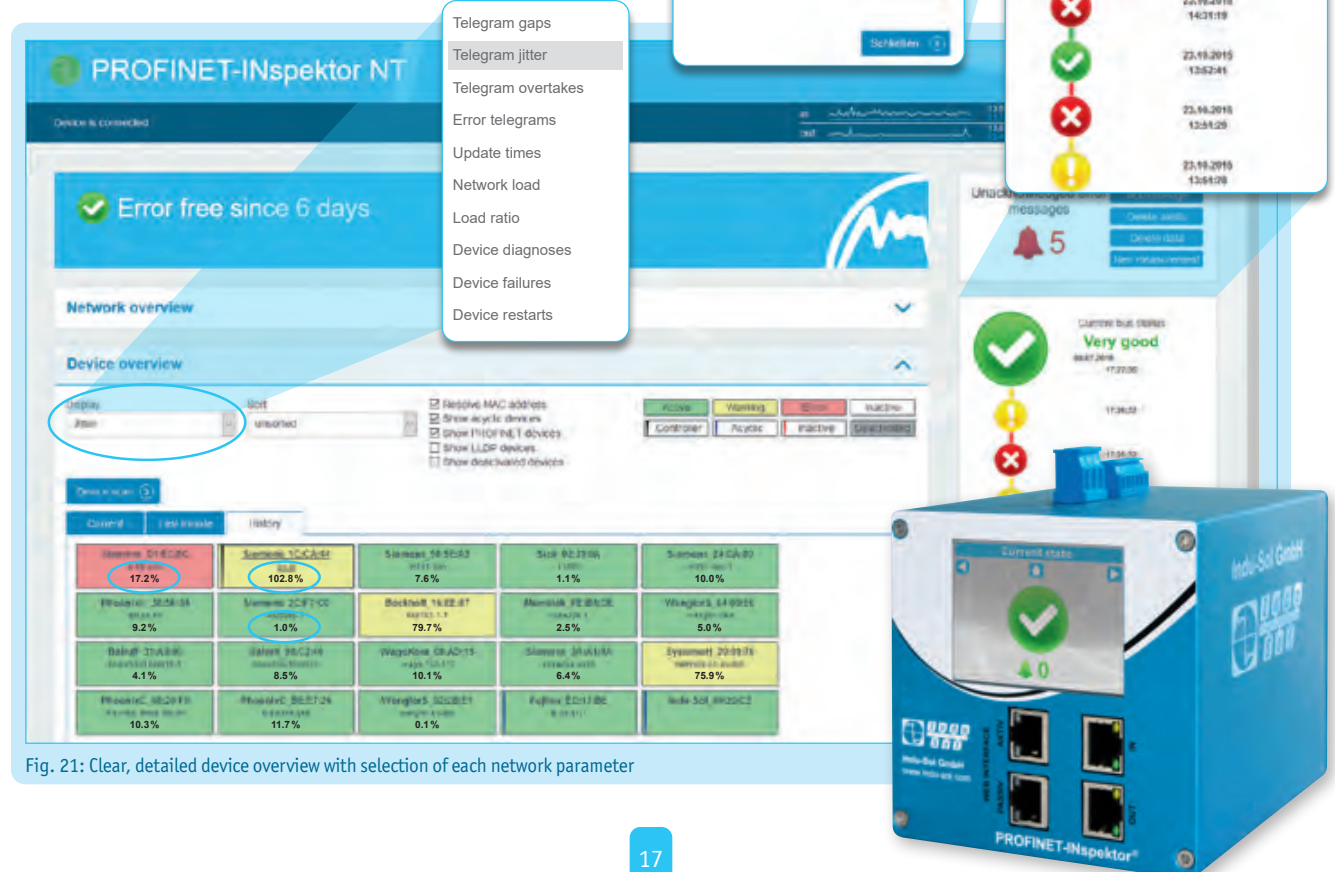


Fig. 21: Clear, detailed device overview with selection of each network parameter

PROFINET-INSpektor® NT analysis and diagnostic tool

Device information

	Last minute	History
MAC address	PhoenixC_38-5F-34	
IP address	10.19.10	
Name	ax-pn-bk	
Alias		
Vendor	AVL BK PN ME	
Vendor ID	Phoenix Contact GmbH & Co. KG (176)	
Device ID	4096	
Device role	Device	
Alert (low priority)	0	0
Alert (high priority)	0	0
Failures	0	0
Restarts	0	0
Frame gaps	0	0
Concurrent frame gaps	0	0
Frame overtakes	0	0
Error frames	0	0
Jitter	0.4%	122.0%
Update rate	min 0.25ms, avg 0.25ms, max 0.25ms	min 0.25ms, avg 0.25ms, max 0.25ms
Measured update rate	0.23ms	0.27ms
Payload (sent)	174.90 B	177.14 B
Payload (received)	174.90 B	177.14 B
Netload (sent per sec)	2.16%	2.19%
Netload (received per sec)	2.16%	2.19%

	Last minute	History
Load ratio	>500 : 1	>500 : 1
Broadcasts (of these PROFINET)	0 (0.0%)	0 (0.0%)
Multicasts (of these PROFINET)	0 (0.0%)	0 (0.0%)
Frames (sent) (of these PROFINET)	239.997 (239.999 / 100.00%)	100.176.240 (100.176.132 / 100.00%)
Frames (received) (of these PROFINET)	240.000 (240.000 / 100.00%)	100.177.025 (100.176.916 / 100.00%)

Topology determination

The **PROFINET-INSpektor® NT** not only determines all relevant device information (device details and port statistics), but even the real wiring (topology). This can also be done remotely without having to establish a direct network access via a service computer or HMI. The scan can easily be started and saved remotely or by using the integrated webserver of the **INSpektor®** from the own company network. The determined topology can then be conveniently opened and evaluated on your own computer using the software **PROscan® Active V2** (see page 13). In addition to manual topology determination, there is the option to set up a regular scan in order to detect changes in the network structure and the devices integrated into the network in good time and to document

Netload visualization (see Fig. 22)

While other diagnostic devices determine the network load by the second or even the minute, the **PROFINET-INSpektor® NT** measures netload by the millisecond and displays it. This makes even minimal load changes in a network detectable. Even in the millisecond range peak loads may cause significant disturbances in the network which would not be detectable without this analysis.

Such short-term peak loads may be caused, e.g. by erroneous hardware settings or active diagnostic tools that continuously send queries into the network.

The network should always be monitored for a consistent netload and any sources of disturbances should be removed. Continuous, passive analysis as provided by the **PROFINET-INSpektors® NT** is an indispensable prerequisite.

Please note:

According to the current certification guideline PROFINET devices are tested and specified with a maximum load per millisecond between 1 and 10%, depending on the netload class.

Source: PROFINET I/O Security Level 1 (Netload) – Version 1.2.1.1 – February 2017

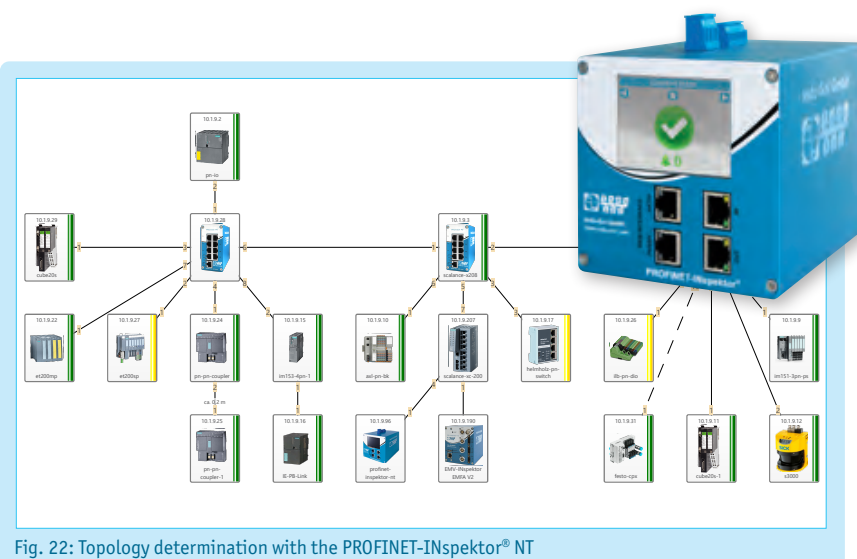


Fig. 22: Topology determination with the PROFINET-INSpektor® NT

these in a trackable form. These topologies are recorded centrally with the help of the software **PROmanage® NT** (see page 24) and remain accessible for a period of up to one year.



PN-INSPEKTOR NT

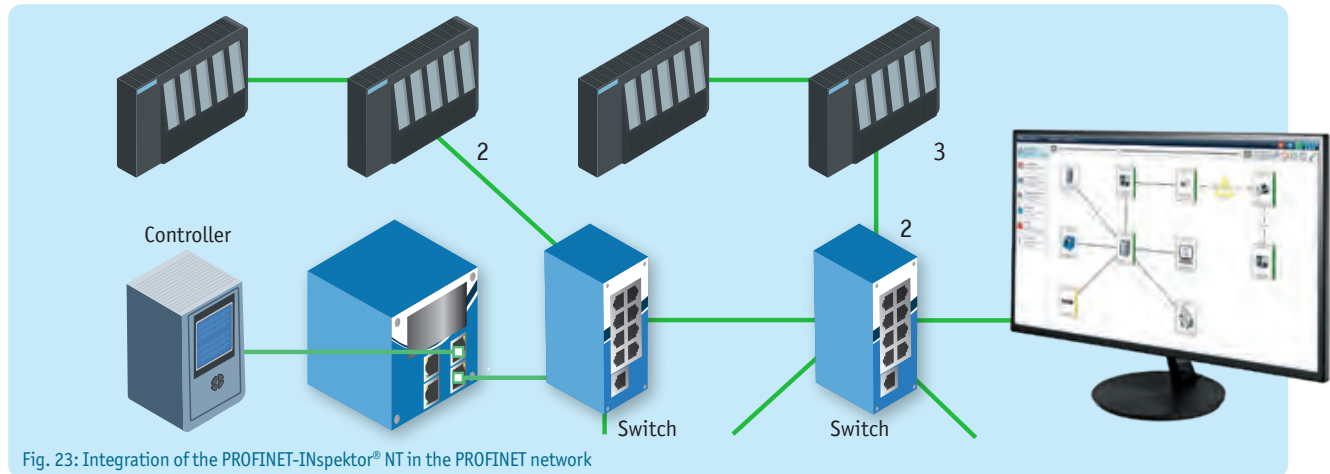


Fig. 23: Integration of the PROFINET-INSPEKTOR® NT in the PROFINET network

Trigger function – Alarms

Trigger functions enable the setting of quality parameters for the network as a whole, but also individually for each device if required.

In the event of changes that exceed the preset thresholds alarm messages (SNMP, OPC UA, email, web interface) are sent or displayed directly via a potential-free contact. The **PROFINET-INSPEKTOR® NT** has an integrated web server and a freely selectable IP address. This enables a visualization of the network condition by means of an Internet browser on any PC, on site or remotely.

In addition to each alarm message telegram copies are stored on the **INSPEKTOR®** and can be downloaded via the web interface for a more detailed error evaluation.

Type	Device	Event	Date	
Status change	00:01:05:16:EE:87	✓ → ! Jitter	26.10.2019 17:49:59.316	📄
Status change	28:63:36:2C:F7:C0 192.168.0.6	✗ → !	23.10.2019 14:32:20.171	📄
Status change	28:63:36:85:B1:B8 192.168.0.1	✓ → ! Telegram gaps	23.10.2019 14:31:21.983	📄
Status change	28:63:36:2C:F7:C0 192.168.0.6	✓ → ✗ Bus node failure	23.10.2019 14:31:18.777	📄
Status change	28:63:36:2C:F7:C0 192.168.0.6	✗ → !	23.10.2019 13:52:41.164	📄
Status change	28:63:36:85:B1:B8 192.168.0.1	✓ → ! Telegram gaps	23.10.2019 13:51:32.572	📄
Status change	28:63:36:2C:F7:C0 192.168.0.6	! → ✗ Bus node failure	23.10.2019 13:51:27.861	📄
Status change	28:63:36:2C:F7:C0 192.168.0.6	✓ → ! Alert (low)	23.10.2019 13:51:27.665	📄

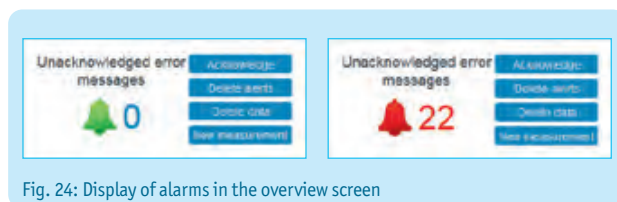


Fig. 24: Display of alarms in the overview screen

User-friendly display of network conditions with traffic light colors and time graphs enable any user to respond quickly in an emergency and ensure a good general overview.

RECOMMENDATION – Quality values

Recommendations on the quality values in PROFINET by Indu-Sol

Jitter (deviation from the planned update time)	≤ 50 %
Telegram gap (missing telegram)	0
Error telegram (defective telegrams)	0
Load ratio (How heavily the network is loaded?)	100 : 1
Netload (in 100 Mbps)	< 20 %



PROFINET-INSpektor® NT analysis and diagnostic tool

Touchscreen

The display serves primarily to show the current status of the network and the accumulated faults. This information makes it possible, without an additional computer, to make an assessment about the status of the network.

Much important system information of the PROFINET-INSpektors® NT is displayed as well. Thus the network

settings are needed to connect to the web interface and to view further detail information. Notes on firmware and hardware versions can be accessed via the display as well.

Navigation between the individual windows is done by touch control via the arrow buttons.



Acceptance log

Just like with PROscan® Active V2, the PROFINET-INSpektor® NT provides the option to have a comprehensive acceptance log generated with just a few clicks.

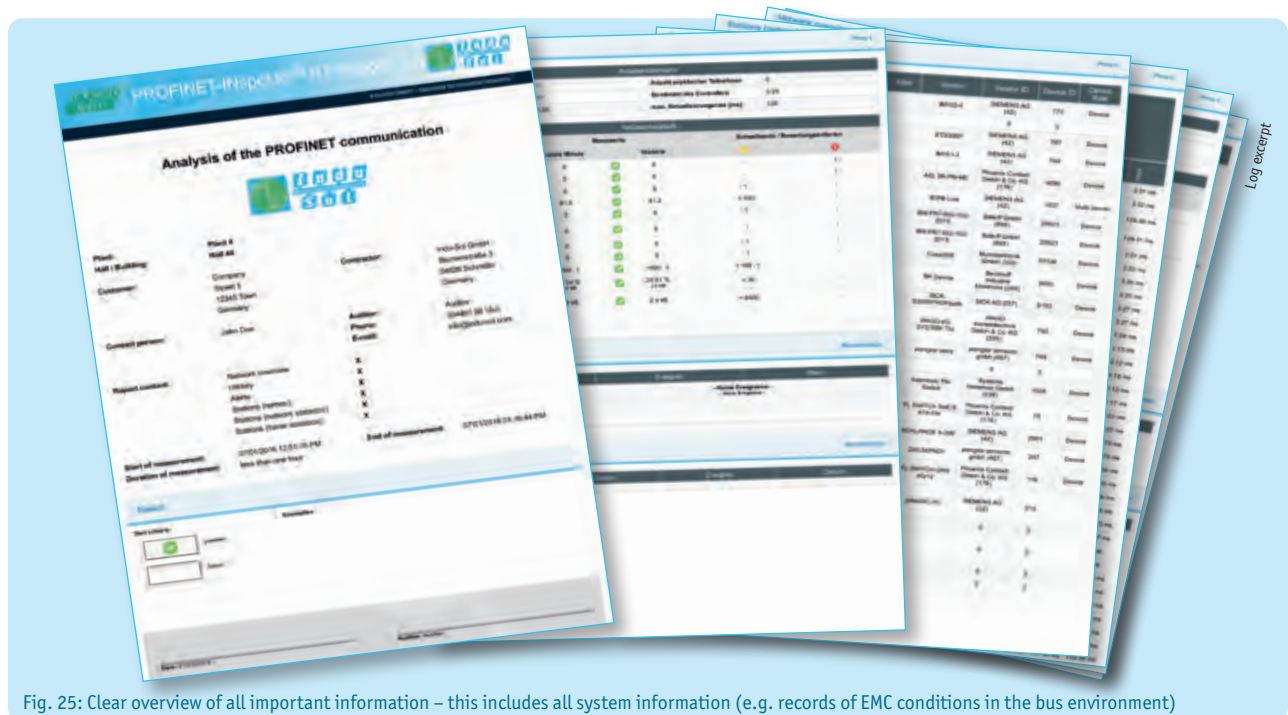


Fig. 25: Clear overview of all important information – this includes all system information (e.g. records of EMC conditions in the bus environment)



PROFINET DiagnosticDUO (PROscan® Active V2 & PROFINET-INSpektor® NT)

Combined, the **PROscan® Active V2** software and the passive data collector **PROFINET-INSpektor® NT** form the perfect navigation system for your network: the **PROFINET DiagnosticDUO**.

Thanks to the teamwork between a live topology map and a diagnostic display the position of each device can be found immediately and its “health status” can be assessed. This enables you to respond promptly and directly to any irregularities. Intuitive traffic-light colors provide a network analysis at a glance.

Highlights

- First user-friendly topological visualization of in-depth network analysis
- Continuous analysis of the communication quality (network load, telegram gaps, jitter etc.)
- Device status is indicated graphically with traffic-light colors in the topology
- Retrieval of current device list (PROFINET name, IP/MAC address, hardware/software versions, device types etc.)



Interaction of diagnosis and topology – PROFINET DiagnosticDUO

By activating the function “Read out **PROFINET-INSpektor® NT**” in the **PROscan® Active V2** software, you can combine the recordings of both tools. This gives you a navigation system for your PROFINET network so you can see the status of all devices displayed graphically with traffic-light colours in the topology.

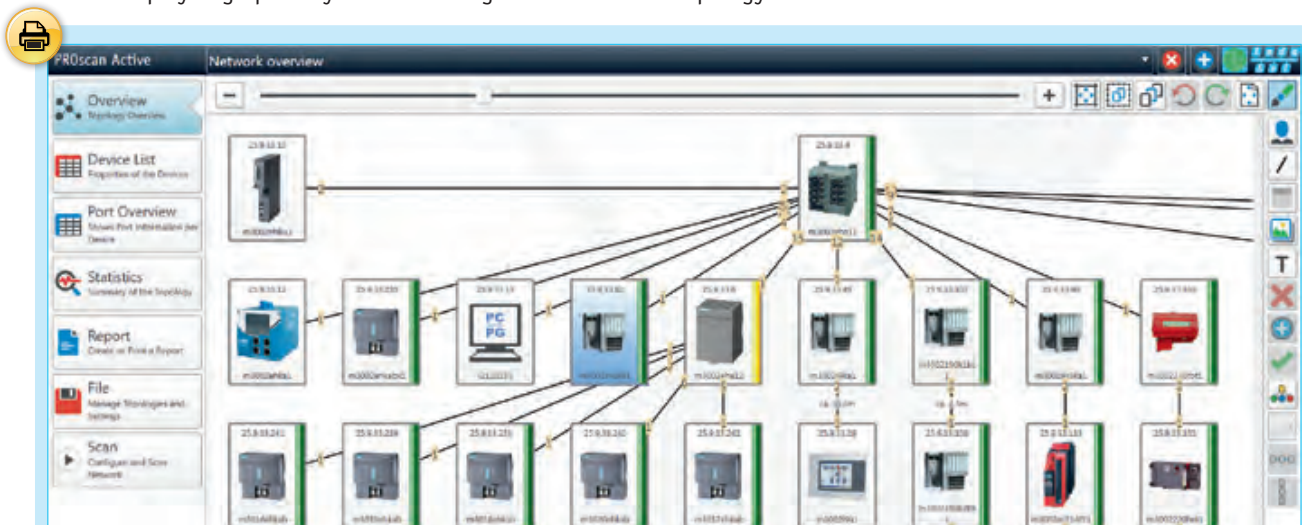


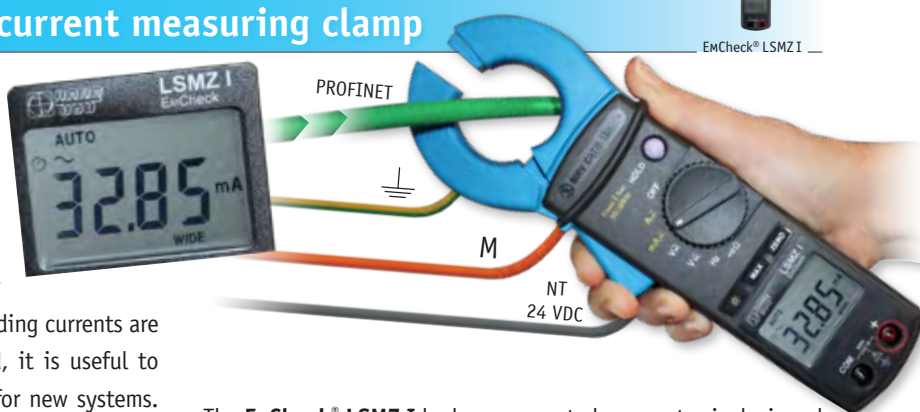
Fig. 26: Information from the topology with PROscan® Active in conjunction with the evaluated quality parameters of the PROFINET-INSpektor® NT

EmCheck® LSMZ I leakage current measuring clamp

Ever more often, compensating currents caused by high-frequency shielding currents create intermittent faults in industrial data communication systems. On one hand, these currents may disturb the transmission itself. On the other, they may damage the devices by overloading. Because such effects of high shielding currents are only noticeable after a some time has passed, it is useful to define limits and document compliance even for new systems. Shielding currents during running operation should be lower than 40 mA.

RECOMMENDATION

Independently of the system specification, experiences at Indu-Sol show that shielding currents of < 40 mA can be tolerated. The decision of what is acceptable should always be made in the context of the frequency range in order to be able to perform suitable measures to reduce shielding currents.



The **EmCheck® LSMZ I** leakage current clamp meter is designed specifically to measure leakage and shielding currents in the frequency range of 50/60 Hz or 5 Hz - 1 kHz. The adjustable measurement range can be set between 30 μ A and 100 A. For measuring shielding currents on a data cable, the lower end of the range is more relevant. The **EmCheck® LSMZ I** leakage current clamp meter is also an ideal tool to find insulation faults and unplanned shutdowns caused by leakage currents and tripped FI switches. It also offers all the features of a multimeter clamp. To determine loop impedances, the **EmCheck® MWMZ II** loop impedance measurement clamp (see page 35) can be used.

PROFINET Diagnostic set



Highlights

- Online network diagnostics: **PROFINET-INspektor® NT**
- Topology software: **PROscan® Active V2**
- Network monitoring software: **PROmanage® NT**
- Leakage current measuring clamp: **EmCheck® LSMZ I**
- Cable diagnostics: **PROlinetest** or alternatively **ETHERtest V5.0 or V5.3**

On request we will provide you with an instruction to the functions, benefits and uses of the complete contents of the **PROFINET Diagnostic set** (see page 34). This introduction is especially suitable for those in charge of commissioning, service and maintenance.

We will gladly provide a separate offer for individual devices (see page 33 ff.).



Intelligent PROFINET measuring point iPNMA

The intelligent PROFINET measuring point **iPNMA** combines the functions of a PROFINET measuring point with a simple PROFINET network analysis. The following quality parameters are determined:

- Telegram jitter
- Telegram gaps
- Telegram overtakes
- Network load
- Update rate
- Device diagnoses
- Device failures and restarts
- Error telegrams



In this case, the evaluation of the recorded data does not take place on the device itself, but instead all data is queried and processed by the **PROmanage® NT** software (see page 24) and processed accordingly.

In addition to the integrated diagnostics function, an analysis tool (e.g. **PROFINET-INSpektor® NT** or laptop) can be connected completely reactionless to the two monitor jacks (monitor M1 and M2) for a more thorough network analysis or troubleshooting.

Highlights

- Monitoring all important PROFINET quality values
- Reactionless measurement point
- Compact design
- In case of a power supply failure, the PROFINET communication remains intact
- Power supply of additional analytic tools via the UOUT (24 V DC) connector

General properties	PN-INSpektor® NT	iPNMA
Passive network access (TAP)	×	×
24 V supply for additional device (PN-INSpektor® NT)		×
Number of monitored participants	512	256
Decoding of DCP / PROFINET parameters	×	×
Monitoring of non-PROFINET communication	×	

Evaluation of the recorded data		
PROmanage® NT	×	×
Touch display showing the network status and further information	×	
Webinterface	×	
Diagnostics mode with PROscan® Active V2	×	

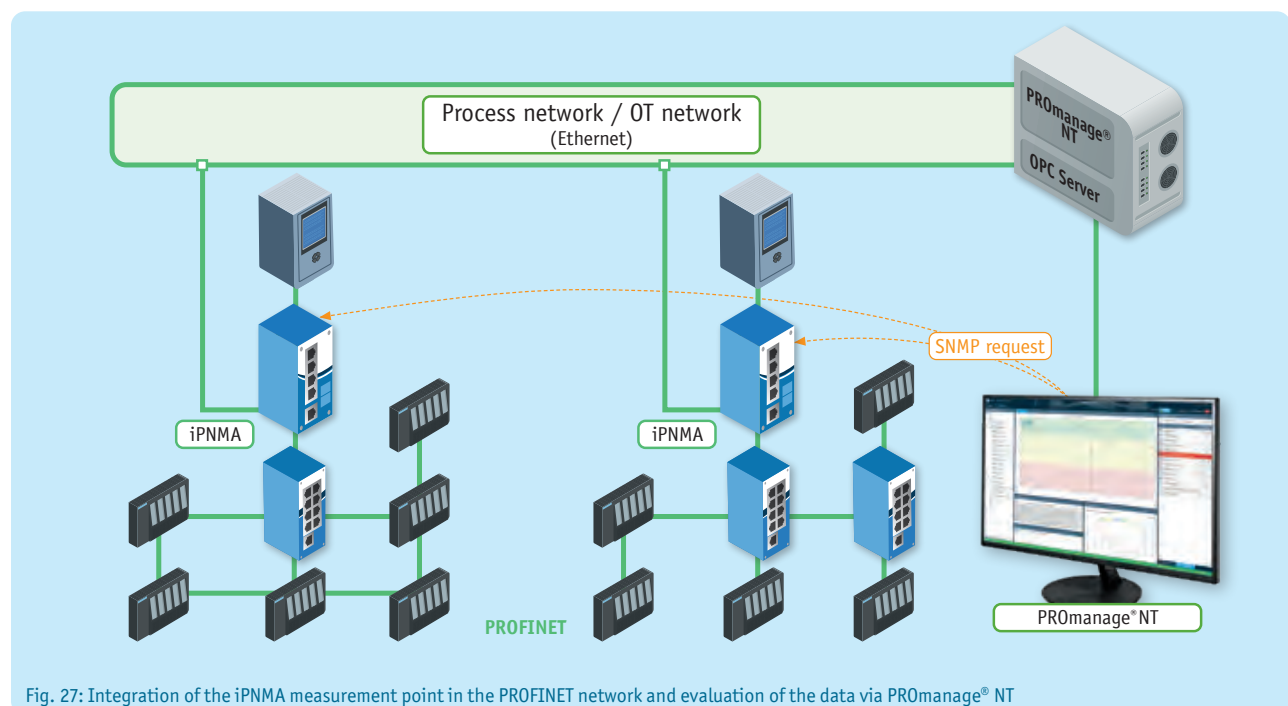


Fig. 27: Integration of the iPNMA measurement point in the PROFINET network and evaluation of the data via PROmanage® NT



PROFINET permanent network monitoring

PROmanage® NT network monitoring software

For preventative, condition-oriented maintenance of PROFINET networks **Indu-Sol** has developed a strategy for permanent network monitoring (referred to as PNM in the following). It provides for condition monitoring with the goal of **“warning before failure”**.

The concept of PNM provides for a continuous network analysis with a decentral, passive data collector, the **PROFINET-INSpektor® NT**. Whenever preset threshold values are exceeded this event is stored together with a time stamp. The installation is between the controller and the first switch port. Each controller therefore requires an **INSpektor®**. With **PROmanage® NT** all external **INSpektors®** are integrated in the monitoring via the existing Ethernet network, and the network conditions are bundled centrally on a server. The network-specific events are pre-processed by the **PROFINET-INSpektor® NT** and provided chronologically by the **PROmanage® NT** network monitoring software for further processing and evaluation.

PROmanage® NT enables the evaluation, analysis and long-term storage of condition data for your fieldbuses and other industrial networks. For this purpose **PROmanage® NT** retrieves the port statistics of manageable switches and the events of the decentral data collectors (**INSpektors®**), evaluates them and displays them graphically.

This sophisticated method of analysis makes irregularities immediately apparent. When a value exceeds or falls below a configurable threshold value an alarm activates. The statistic function keeps data exact to the minute available up to one year. This means historical events can be opened up for viewing at any time for cause analysis, e.g. of sporadic failures.

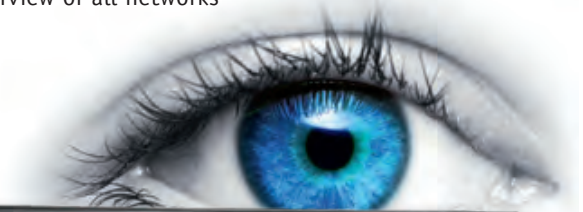


Highlights

- Central monitoring of all fieldbuses and networks
- Avoid system failures
- Timely warning via OPC, SNMP trap or email in case of irregularities
- Data exact to the minute available up to one year
- Quick installation
- Easy device set-up due to automatic and manual device scan

To improve system availability the following targets are set for a PNM system:

- Continuous monitoring of real communication
- Complete monitoring and detection of causes of network weaknesses
- Automatic alarms when negative developments occur
- Central overview of all networks





PROmanage® NT

Topology

The software **PROscan® Active V2** and/or a decentralised data collector such as the **PROFINET-INspektor® NT** determine the topologies of the individual networks. With the help of the software **PROmanage® NT**, these can be recorded at a central point, can be bundled, and therefore be displayed to the user in a clear manner, including all device information and statistics that were obtained. This creates a permanent, up-to-date, and real overview over which devices are located where in the network and what their status is. This allows for the affected devices being located quickly in case of incidents in the network. If changes are made to the wiring of the network, the respective times can be determined through the continuous recording of the topology. The anomalies that can be detected in this manner include removed and newly

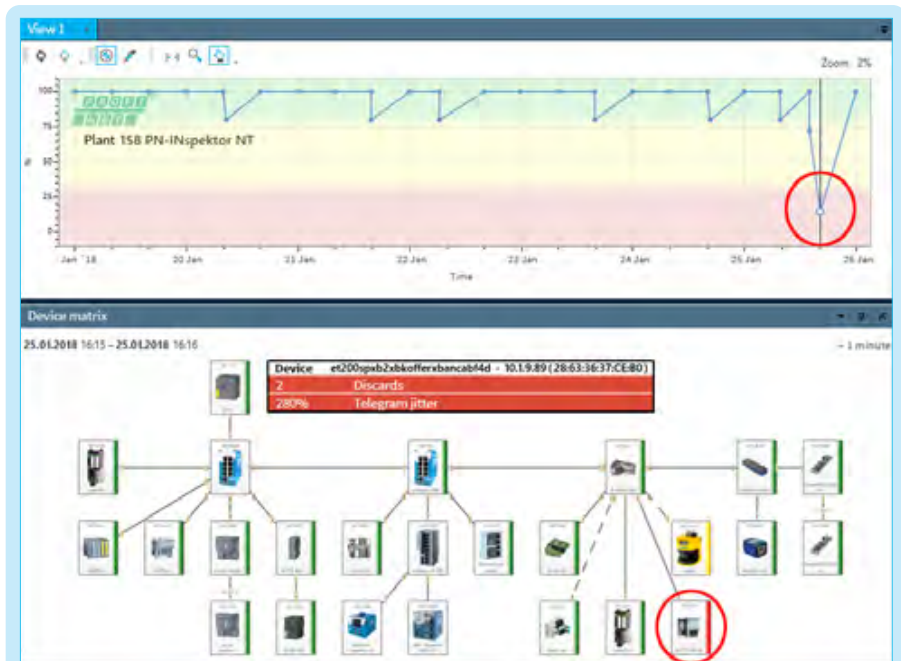


Fig. 28: Central topology detection in PROmanage® NT

added devices as well as changes in port allocation of the switches in question.

Plant layout

In order to get a better overview of the real plant layout, individual devices in the topology can be allocated to individual system parts or installation locations for example, control cabinets, robots, etc. This allows for a comparison of the determined network structure with the real system

layout (see Figure 29). This function allows for the mapping of complete assembly lines or a complete floor plan, so that a central contact point is available for the condition monitoring system.

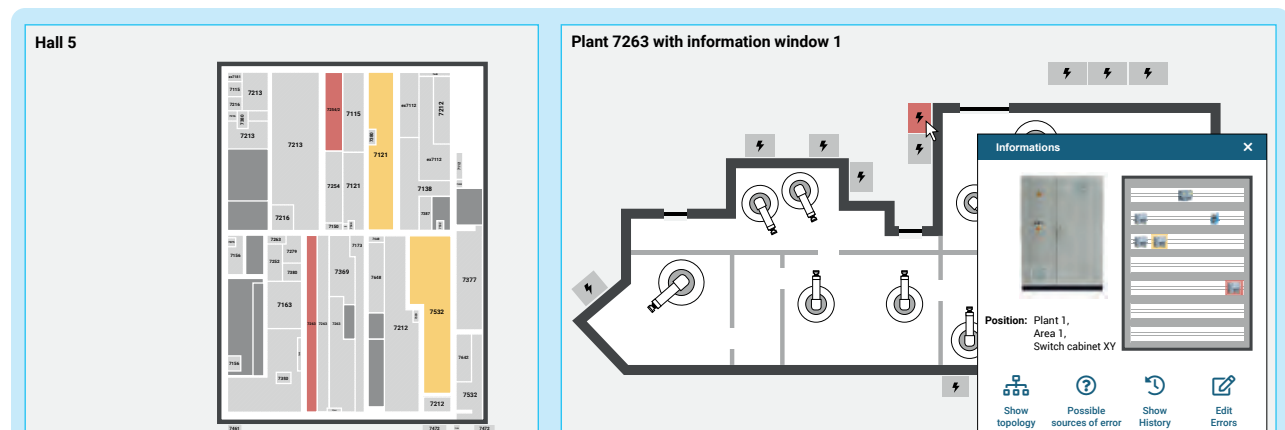


Fig. 29: Display of the recorded network structure in the real plant layout



PROFINET permanent network monitoring



PROmanage® NT

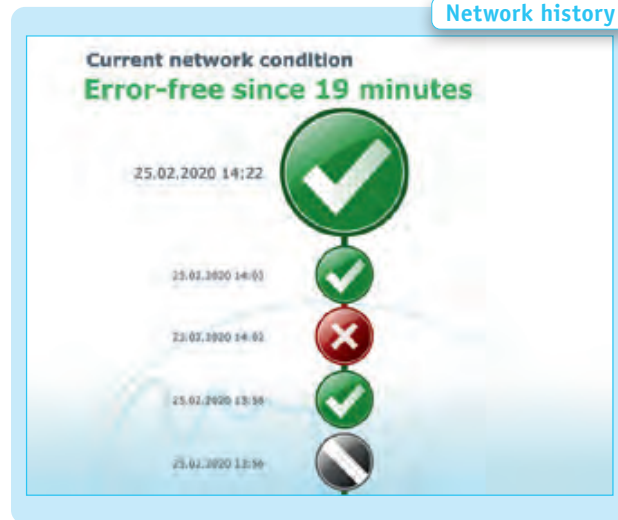
Network history

How is my network?

The network history provides a quick and clear overview of:

- The current network status
- How long a network has run without error
- When the last error occurred (with time stamp)

Network history

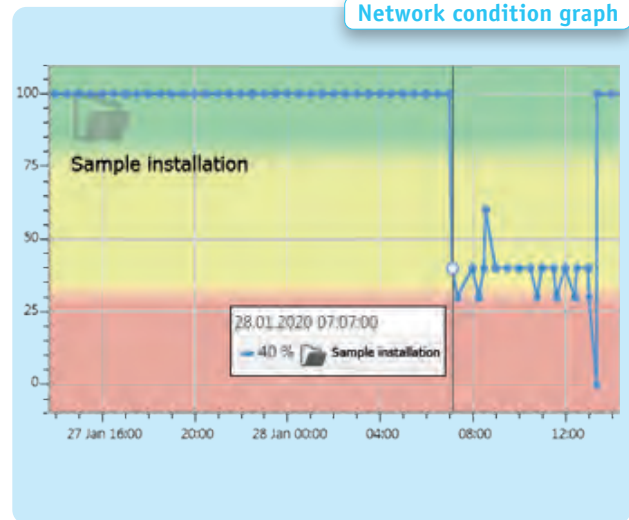


Network condition graph

A user-friendly interface can be used to display and evaluate the information. The interface can be adapted to your unique needs and spread over several physical screens for better overview.

Various parameters of different devices such as device temperature and failures can be compared in a graph to detect links in the event of malfunction.

Network condition graph



Event messages with time stamp

With the integrated threshold management threshold values can be defined for every network parameter. When a limit is reached an entry with a time stamp and event description is made automatically in the event list. Information about network errors can be retrieved from the event list with a mouse click.

Event messages with time stamp

Jan	Feb	Mar	Apr	May	Jun	Jul	Aug	Sep
1	2	3	4	5	6	7	8	9
10	11	12	13	14	15	16	17	18
19	20	21	22	23	24	25	26	27
28	29	30	31					

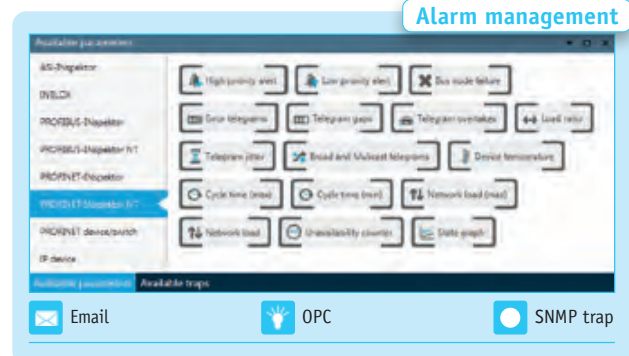
A maximum of 1000 elements of the selected filter will be displayed.

Message type	Message	Date
Node	Threshold exceeded INILOX G3 Segment 8 - Ch. 1 - DP Diag	
Parameter	Bus node restart	5/3/2015 12:36:00 PM
value	4	
Node	Threshold exceeded INILOX G3 Segment 8 - Ch. 1 - DP Diag	
Parameter	Repeat telegram per bus cycle	5/3/2015 12:36:00 PM
value	8	
Node	Threshold exceeded INILOX G3 Segment 8 - Ch. 1 - DP Diag	
Parameter	Internal diagnosis	05.05.2015 12:26:00
value	4	
Node	Threshold exceeded INILOX G3 Segment 8 - Ch. 1 - DP Diag	
Parameter	External diagnosis	5/3/2015 12:36:00 PM
value	2	

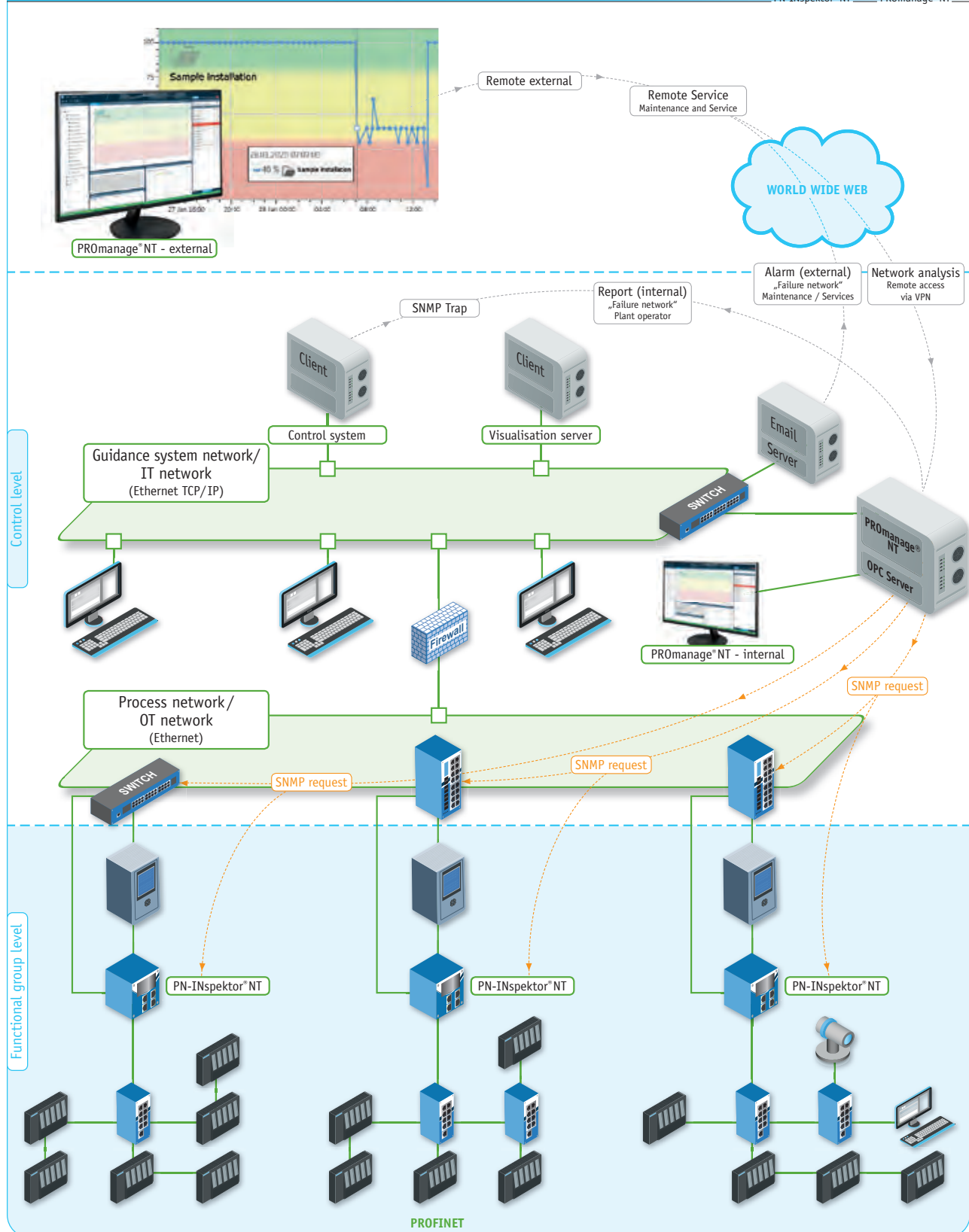
Alarm management

Integrated alarm management enables automatic forwarding of device notifications. By selecting suitable information medium (email, message services, OPC, SNMP) all messages can be transmitted to the responsible persons in a timely fashion. This shortens notification paths and prevents undesired plant breakdowns.

Alarm management



Configuration example (PNM)





PROFINET Switches PROmesh P9 and P20

The Indu-Sol PROFINET Switches PROmesh P9 and P20 are the first full PROFINET switches that are equipped for the increased performance requirements in the PROFINET and conform to Conformance Class B and Netload Class III requirements. This functionality makes it possible to integrate the switches into the automation system (Step7, TIA Portal) by an engineering tool in order to make a comprehensive network diagnostic feasible. This feature supports numerous necessary and useful functions as opposed to standard switches:

- Sending of device diagnostics to the controller (PN-RTA)
- Neighbourhood detection (LLDP)
- Port-related network statistics (PDEV)
- Network diagnostics via IT mechanisms (SNMP)
- Higher availability thanks to ring redundancy (MRP)

With its optimised shielding contacts in the RJ45 jacks and leakage current monitoring, the **PROmesh series** not only meets the requirements for PROFINET functionality but also fulfils highest demands for EMC resistance in the industrial environment.

Diagnosis function

The **PROmesh P9/P20** can be adapted individually to your needs and network specifications. If requested you get notified about any changes in the network to be up-to-date and swift to react.

The clear structured web interface of the **PROmesh P9/P20** shows at a glance all relevant information to evaluate the data traffic quality on a central position in the network.

Special attention is drawn to the following quality parameters:

- Number of error telegrams (Errors)
- Number of discarded telegrams (Discards)
- Network load level
- Correct port configuration
- Leakage current level



Highlights

- Full PROFINET functionality (Conformance Class B)
- Netload Class III Certification (highest requirement for high network traffic ruggedness)
- Permanent Leakage current monitoring, incl. frequency spectrum
- Graphic display of the port utilisation (with millisecond precision)
- Optimised shielding contact of ports
- Display of discards on the web interface

Additional features PROmesh P20:

- NAT Routing
- Firewall
- SFP Gigabit ports (copper and FOC)

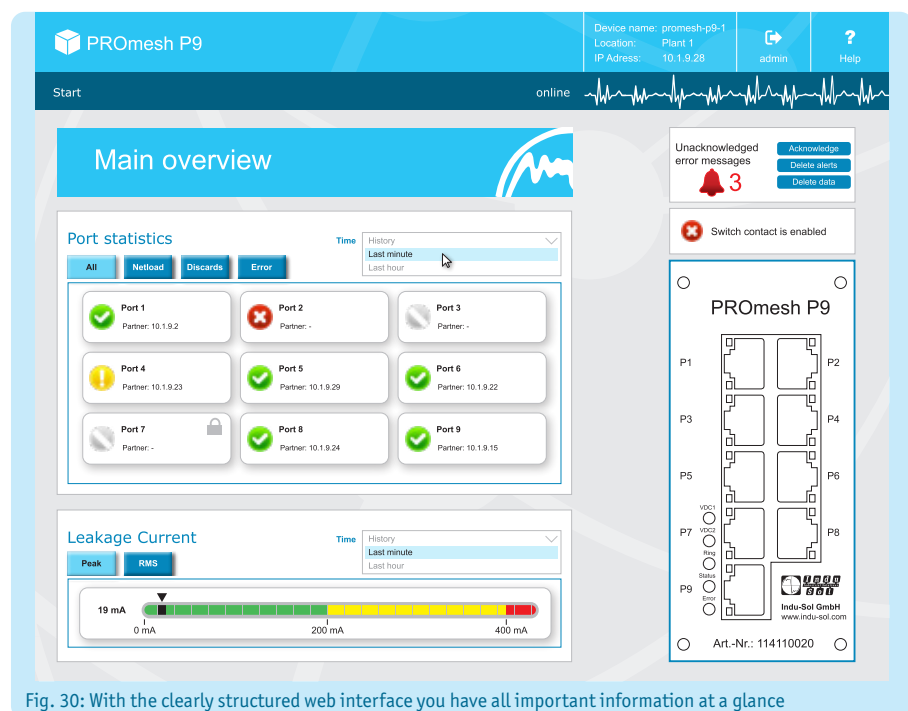


Fig. 30: With the clearly structured web interface you have all important information at a glance



PROmesh P9 — PROmesh P20

Network utilisation with millisecond precision

In PROFINET networks even briefest peaks in the network utilization can lead to a malfunction in the data communication and thus cause faults. To properly detect these network peaks, the **PROmesh series** determines the network utilisation with millisecond precision and presents them graphically on the web interface or issues an appropriate alarm if exceeded.

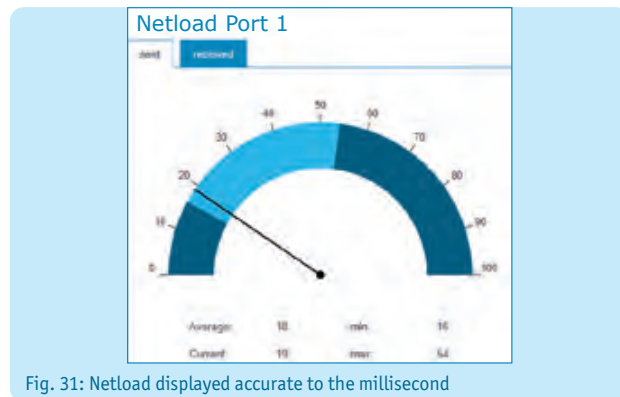


Fig. 31: Netload displayed accurate to the millisecond

EMC Leakage current monitoring

Leakage current monitoring makes it possible to permanently record and evaluate the sum of all shielding currents of the PROFINET lines. The corresponding spectrum with the respective frequency components is specified for this in addition to the current value. Using this integrated function, the **PROmesh series** also offers mechanisms for detecting EMC faults or couplings in addition to the complete PROFINET diagnostics.

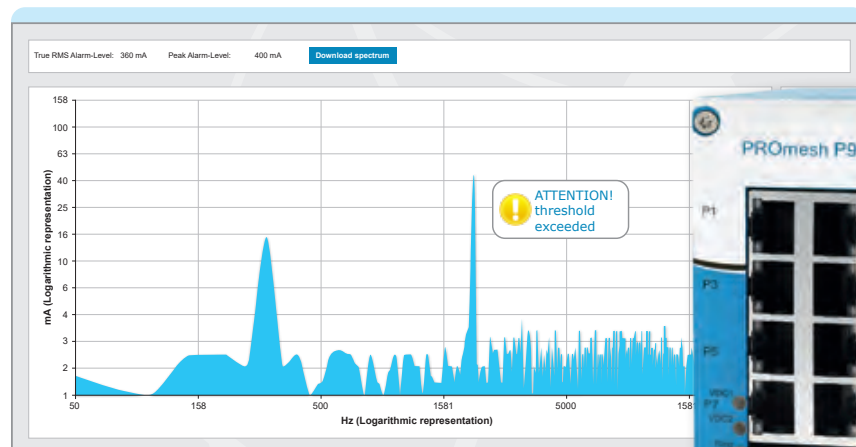
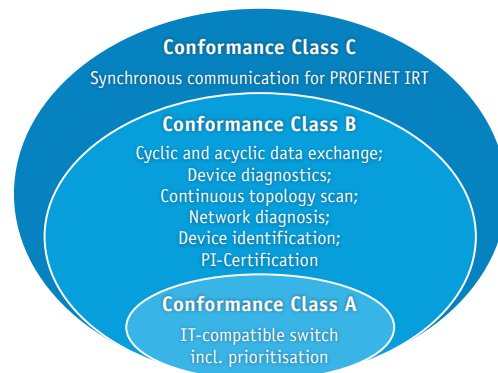


Fig. 32: Detailed illustration of the leakage current monitoring

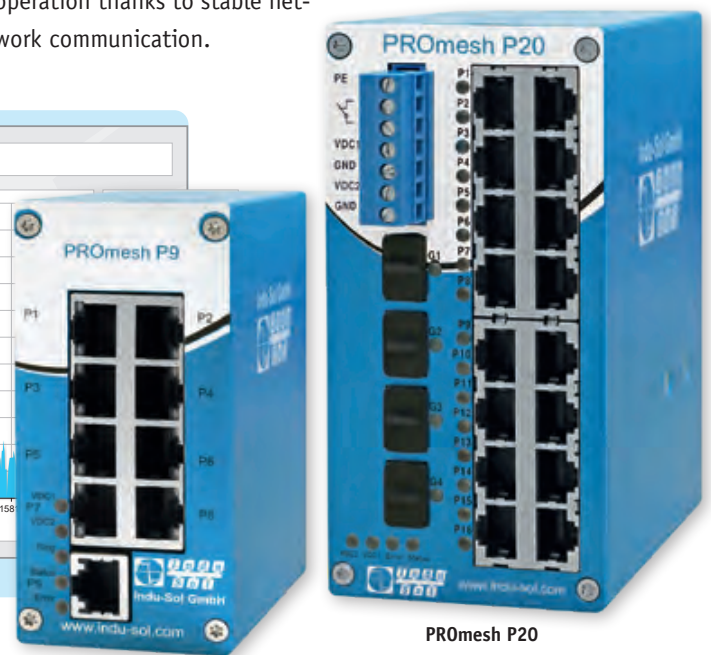
Conformance Class

The functionality of PROFINET IO devices is divided in clear conformance classes. These summarise different minimum characteristics. For infrastructure components like switches the conformance class B is of special importance as it includes the fundamental PROFINET functionalities and therefore covers the requirements of 99% of all the PROFINET networks installed in the field.



Netload Class III

Netload classes define the sturdiness of a device in regard of the intensity of the data traffic. The **PROmesh P9/P20** is certified for the highest netload class III which is the first time a switch with more than 4 ports fulfils these requirements. Therefore, the new switch is the foundation for a frictionless operation thanks to stable network communication.



PROmesh P9

PROmesh P20



PROFINET infrastructure components

PROmesh FX: Long-distance hub using FOC



PROmesh FX

The manageable switches of the PROmesh FX series are ideally suited for long-distance data transmission using fibre optic cables and have six further RJ45 ports for connecting local devices. This system can be used for the establishment of star structures as well as for redundant ring structures.

In addition to the complete PROFINET functionality and the integrated diagnosis of the fibre optic cables, a range of useful management features such as IGMP snooping, VLAN, QoS, SNMP, bandwidth management as well as email or relay output warnings are supported.



Highlights

- Data transmission over a distance of up to 30 km
- Ring redundancy
- Essential diagnosis information at a glance – simple, clear, understandable web interface
- Reliable performance, also in times of high network traffic (Netload Class III-certified)
- Full PROFINET-IO functionality (Conformance Class B)

PROmesh IP67 Switch: The robust network without control cabinet



PROmesh IP67 Switch

on request!



Exemplary illustration

Thanks to the high protection class IP67, the manageable switch is ideally suited for use in rough industrial environments and for installation without control cabinet. A simple and intuitive user interface allows even inexperienced users to quickly configure the system. The switch supports further useful management features in addition to the full PROFINET functionalities.



Highlights

- High protection class IP67
- Robust aluminium casing
- Full PROFINET functionality
- M12 Ethernet ports



PROFINET measuring points PNMA II / PNMX

The PNMA II provides feedback-free access for telegram recording in the PROFINET and other Ethernet-based networks during running production. We recommend installing the PNMA II measuring point permanently in the network connection between the automation device (controller) and the first switch, because the major part of the communication typically passes through here.

The measurement point with the PNMX version and IP 67 protection can be installed in rough production environments without any protective housing. Diagnostic tools are connected via M12 measurement jacks (M12 D-coded).

Function

For the feedback-free connection of an analysis tool (e.g. **PROFINET-INSpektor® NT** or laptop) two monitor sockets (M1 and M2) are available on the **PNMA II**/**PNMX** for diagnostics. This means both communication directions can be monitored simultaneously.

An analysis tool is connected to the monitor sockets by means of two network cables. For analysis and evaluation of the measurement results the telegrams from both communication directions can be overlaid. The **PNMA II**/**PNMX** does not discard error telegrams. Instead, it forwards them.

Highlights

- If connecting a **PROFINET-INSpektor® NT** via a **PNMA II**, only two additional patch cables are needed (no crossover cable required).
- In case of a power supply failure the PROFINET communication via the **PNMA II** remains intact.
- Power supply of additional analytic tools via the UOUT (24VDC) connector
- **PNMX IP 67** for rough production environments

Properties

- Monitoring of all protocols
- Supports all packet sizes
- No packet loss
- All connection ports on the front panel
- No additional effort to connect a measuring device
- Tested interaction with the **PROFINET-INSpektor® NT**
- No free switch port necessary
- Bi-directional data transmission up to 100 Mbps
- No network interruption when connecting diagnostic tools

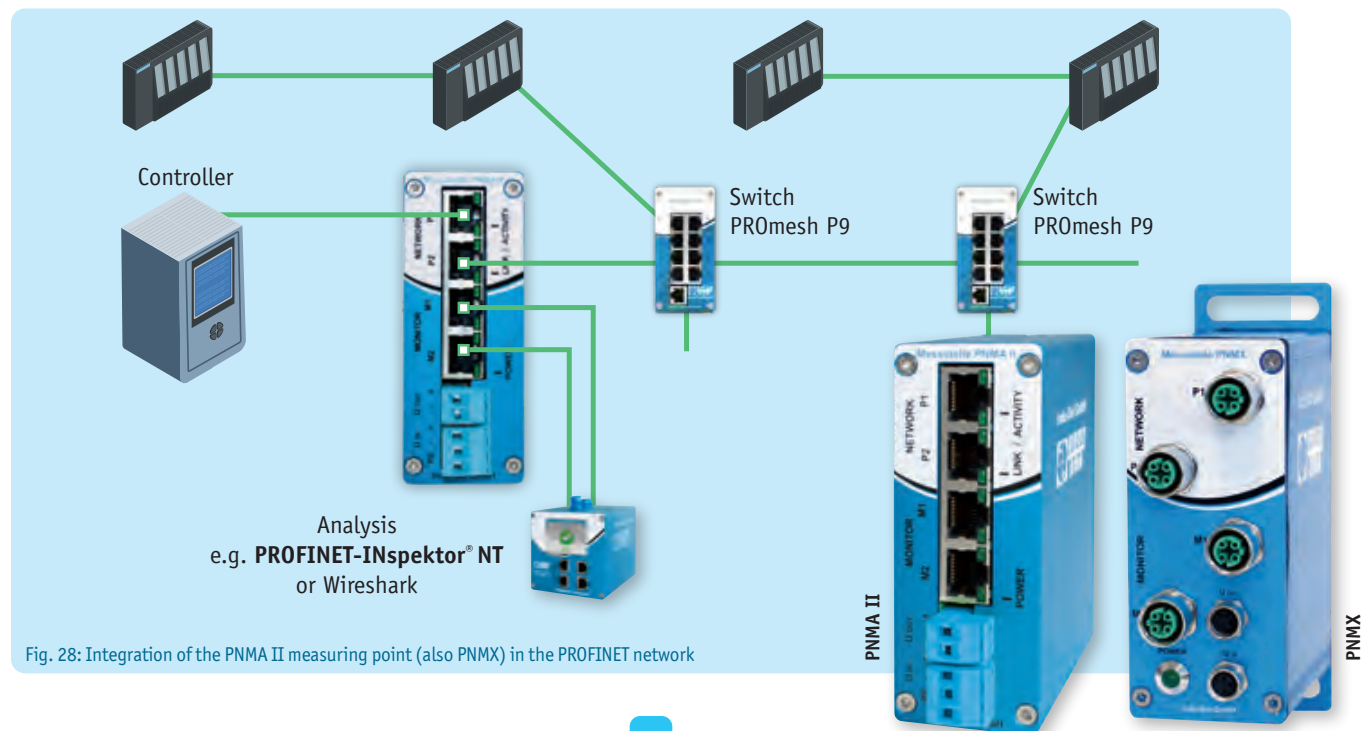


Fig. 28: Integration of the PNMA II measuring point (also PNMX) in the PROFINET network



Consulting



Services include:

Based on years of experience we offer expert consultation in all matters related to fieldbuses and industrial data communication at all stages from the concept to practical use. We support you during network planning, documentation and commissioning. This includes e.g. the drafting of delivery specifications or product requirement documents. Our service also includes assembly supervision and the final acceptance and certification of your network. We offer training for your operating personnel to familiarize employees with the network specifications of your system.

We will gladly visit you for a “round table” and demonstrate the opportunities offered by our permanent network monitoring.

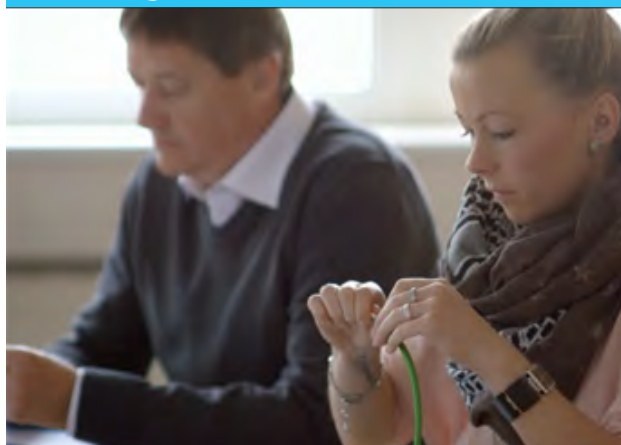
Measurement



Services include:

- Measurement of communication quality and creation of a measurement report
- Acceptance and certification of systems according to standards and PI guidelines
- Commissioning support
- Emergency support for troubleshooting
- Close-to-bus EMC evaluation / evaluation of equipotential bonding quality
- WLAN measurement incl. site survey

Training



Services include:

- Planning / installation / service
- Fundamentals of Ethernet / PROFINET / WLAN / EMC
- Practical network know-how (cables, plugs, structure, address assignment, commissioning etc. ...)
- Measurement devices / principles / methods / diagnostic options
- Practice (installation, telegram exchange, PNM, switch management, network security etc.)
- Certification of PROFINET installers



Network planning



PROnetplan (see page 10)

Network planning software

Ordering Details	Art. No.
PROnetplan	114010009

Analysis | Diagnostics | Measurement



ETHertest V5 (see page 12)

PROFINET Cable tester (suitable for certification)

Ordering Details	Art. No.
ETHertest V5.1 (extendable for FOC)	112010011
ETHertest V5.3*	112010022



PROlinetest (see page 12)

PROFINET Cable tester

Ordering Details	Art. No.
PROlinetest*	112010010



PROscan® Active V2 (see page 13)

Active acceptance test and validation software

Ordering Details	Art. No.
PROscan® Active V2 – 1x license* (Basic license)	117000053
PROscan® Active V2 – 5x license*	117000057
PROscan® Active V2 – 25x license*	117000061
Upgrade PROscan® Active V1 to V2	117000052

*All adapters for PROlinetest and ETHertest V5.1/V5.3 on request.

*Further licences upon request



Analysis | Diagnostics | Measurement



PROFINET-INSpektor® NT (see page 17)

Analysis and diagnostic tool

Ordering Details	Art. No.
PROFINET-INSpektor® NT	124030100



iPNMA (see page 23)

PROFINET intelligent measuring point

Ordering Details	Art. No.
iPNMA	114090200



PROFINET DiagnosticDUO (see page 21)

PROscan® Active V2 (1x license)

PROFINET-INSpektor® NT

Ordering Details	Art. No.
PROFINET DiagnosticDUO	124030020



PROFINET Diagnostic set (see page 22)

All essential tools for commissioning and troubleshooting

- Analysis and diagnostic tool **PROFINET-INSpektor® NT**
- Topology software **PROscan® Active V2**
- Network monitoring software **PROmanage® NT**
- Cable tester **PROlinetest** (optionally incl. **ETHERtest V5.1/V5.3**)
- Leakage current measuring clamp **EmCheck® LSMZ I**

Ordering Details	Art. No.
PROFINET Diagnostic set (with PROlinetest)	114010020
PROFINET Diagnostic set (with ETHERtest V5.1)	114010040
PROFINET Diagnostic set (with ETHERtest V5.3)	114010054

Permanent network monitoring



PROmanage® NT (see page 24)

Network monitoring software

*The licence defines the maximum number of network ports or devices retrieved simultaneously. (Ethernet switch: number of network ports = number of licence ports, 1 PB-INSpektor® = 8 ports, 1 PN-INSpektor® = 16 ports)

Ordering Details	Art. No.
Upgrade NT to NT V2	117000100
PROmanage® NT (80 Ports*)	117000104
PROmanage® NT (320 Ports*)	117000106
PROmanage® NT (640 Ports*)	117000110

*Further licences upon request

EMC analysis | EMC diagnosis | EMC measurement



EmCheck® LSMZ I (see page 22)

Leakage current measuring clamp

Ordering Details	Art. No.
EmCheck® LSMZ I	122010005
Set of measuring clamps (LSMZ I and MWMZ II)	122010006



EmCheck® MWMZ II

Mesh resistance measuring clamp

Ordering Details	Art. No.
EmCheck® MWMZ II	122010010
Set of measuring clamps (LSMZ I and MWMZ II)	122010006

Infrastructure components



PNMA II



PNMX IP67

PNMA II / PNMX (see page 31)

PROFINET measuring points

Ordering Details	Art. No.
PNMA II	114090100
PNMX IP 67 (for rough production environments)	114090300



Infrastructure components



PROmesh P9 (see page 28)

PROFINET/Ethernet Switch

Ordering Details	Art. No.
PROmesh P9	114110190



PROmesh P20 (see page 28)

PROFINET/Ethernet Switch

Ordering Details	Art. No.
PROmesh P20	114110150



SFP module RJ45



SFP module SM/MM

PROmesh P20 SFP modules

PROFINET/Ethernet modules

Ordering Details	Art. No.
SFP module 1 gbps RJ45	114120003
SFP module 1 gbps 20 km SM-LC	114120004
SFP module 1 gbps 0,55 km MM-LC	114120005
SFP module 100 mbps 2 km MM-LC	114120006
SFP module 100 mbps 20 km SM-LC	114120007



PROmesh FX (see page 30)

PROFINET/Ethernet Switch

Ordering Details	Art. No.
PROmesh FX MM-ST	114110030
PROmesh FX SM-ST	114110031
PROmesh FX MM-SC	114110032
PROmesh FX SM-SC	114110033

Infrastructure components

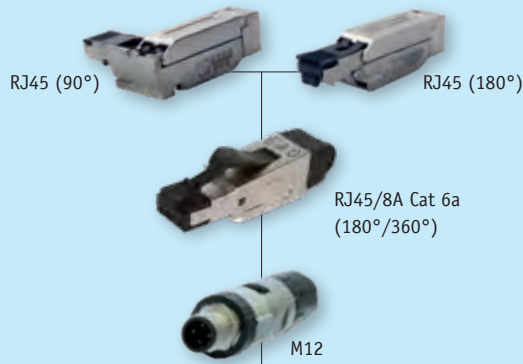


PROFINET BLUambas®

PROFINET wireless system via Bluetooth

Ordering Details	Art. No.
BLUambas® PN classic IP20* (4 device participant)	125100200
BLUambas® PN classic IP65* (4 device participant)	125100201
BLUambas® PN comfort IP20* (6 device participant)	125100202
BLUambas® PN comfort IP65* (6 device participant)	125100203
BLUambas® PN premium IP20* (6 dp + PROFIsafe)	125100204
BLUambas® PN premium IP65* (6 dp + PROFIsafe)	125100205

*Antennas and accessories on request



PROFINET plugs

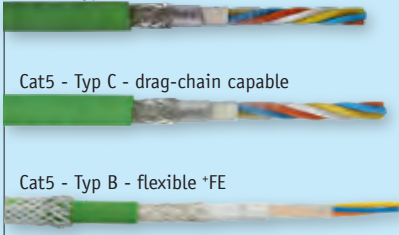
RJ45 / M12 Fast Connect

Ordering Details	Art. No.
PROFINET plug RJ45 (180°)	114030003
PROFINET plug RJ45 (90°)	114030004
PROFINET plug RJ45/8A Cat6a (180°)	112030008
PROFINET plug RJ45/8A Cat6a (360°)	112030009
PROFINET plug M12	114030002

Cat5 - Typ B - flexible

Cat5 - Typ C - drag-chain capable

Cat5 - Typ B - flexible *FE



PROFINET cable

Cat5 / *FE (flexible / drag-chain capable)

Ordering Details	Art. No.
PROFINET cable Cat5 (Typ B - flexible)	114060001
PROFINET cable Cat5 (Typ C - drag-chain capable)	114070001
PROFINET cable *FE (Typ B - flexible)	114060003

PROFINET tools

Ethernet Fast Connect Stripping Tool

EmFlex Stripping Tool



Stripping Tools

Ordering Details	Art. No.
Ethernet Fast Connect Stripping Tool	112020005
EmFlex Stripping Tool	122130010



Services (Measurement | Training)



Measurement / Troubleshooting (see page 32)

Network analysis / Certification, Troubleshooting

Ordering Details	Art. No.
Network analysis / Certification	210030000
Troubleshooting	210030003



Training (see page 32)

PROFINET seminars

Ordering Details	Art. No.
One-day seminar (1 day)*	220030012
User training PROFINET (2 days)*	220030001



Training (see page 32)

PROFINET seminar **PI certified** incl. test

Ordering Details	Art. No.
Certified PROFINET Installer (2,5 days)*	220030013
Certified PROFINET Engineer (2,5 days)*	220030016



Training (see page 32)

Security seminar

Ordering Details	Art. No.
One-day seminar (1 day)*	220090010



Training (see page 32)

Network planning seminar

Ordering Details	Art. No.
One-day seminar (1 day)*	220090012

*On-site training at your premises.

Notes



PROFINET - The Movie | Technology Made Easy

www.indu-sol.com/profinet-movie or use the QR code directly

Indu-Sol GmbH
Blumenstrasse 3
04626 Schmoelln

Telephone: +49 (0) 34491 580-0
Telefax: +49 (0) 34491 580-499

info@indu-sol.com
www.indu-sol.com

Certified according to DIN EN ISO 9001:2015

InduSol America, LLC
980 Birmingham Rd. Ste 721
Alpharetta, GA 30004, USA

Telephone: +1.678.880.6910
+52 (55) 8526-6442

info@indusolamerica.com
www.indusolamerica.com