

YOUR BRIDGE TO DIGITALIZATION

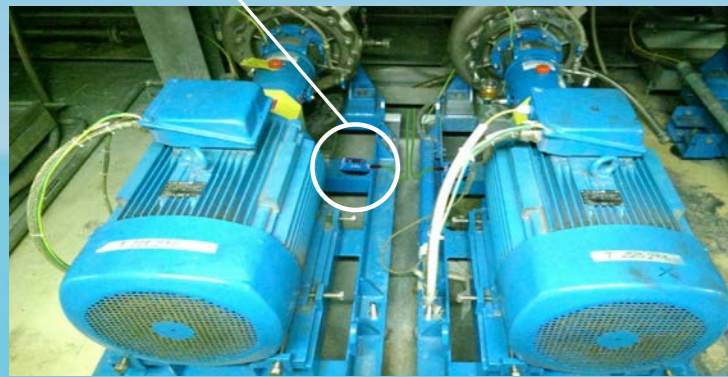
D*BRIDGE + SIEDS



With its self-learning teach mode and intelligent alarm management, the SIEDS sensor can be used for any type of condition monitoring in predictive maintenance and offers the possibility to evaluate a wide variety of assets in the industrial environment.



usecase:
Condition monitoring on
motor pump combination



Technical data

- Network connection: M12 D-coded
- Transmission rates: 100 Mbps
- Power supply: Power over Ethernet
- Operating temperature: -40°C to +70°C
- Protection class: IP65
- Mounting: Direct mounting
- Protocol interfaces: RestAPI, MQTT, HTTPS

Sensors

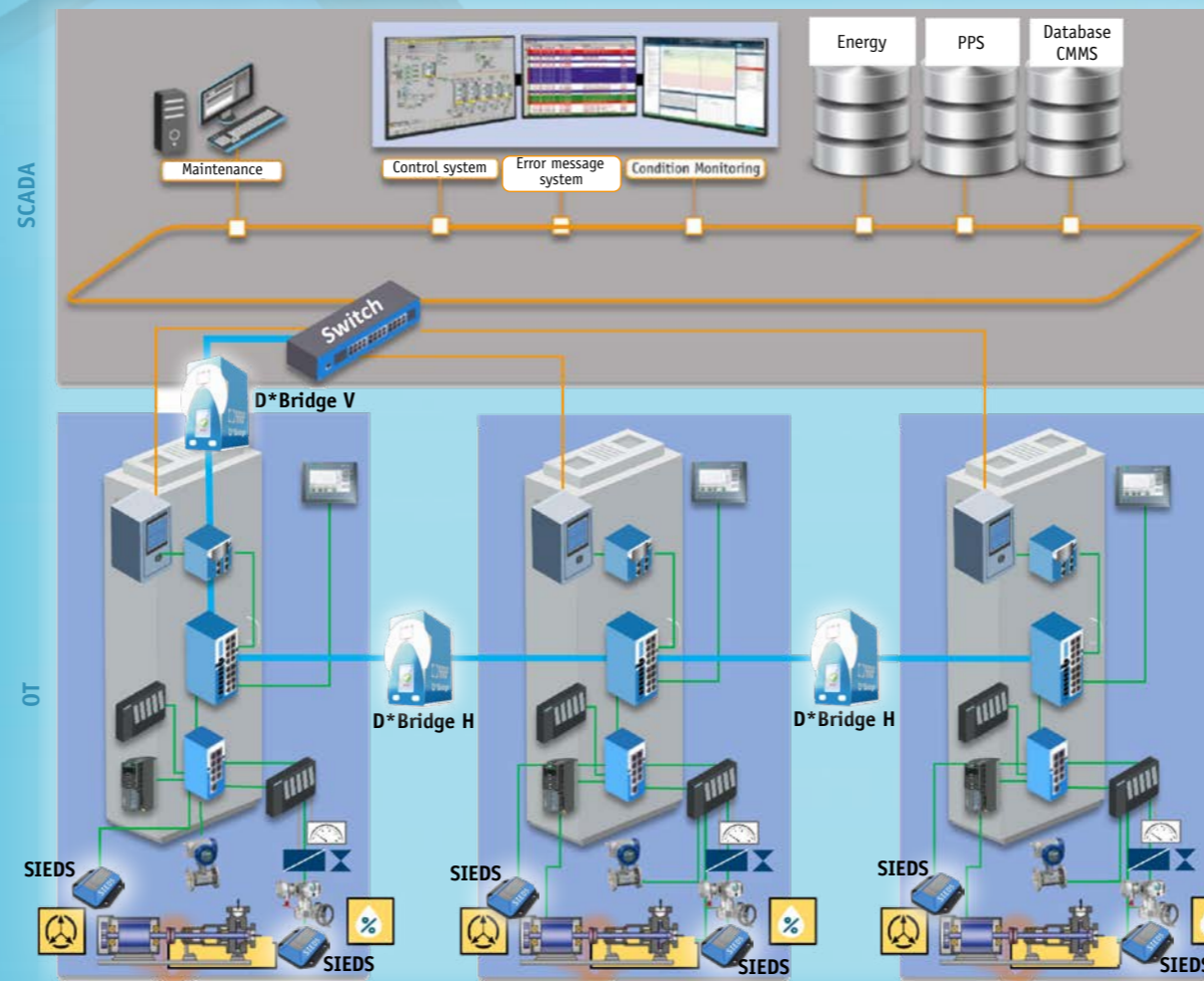


The D*Bridge is an intelligent bridge device, which connects two or more fieldbuses on the OT level to one network. The device is used without configuration and is therefore ideal for users without a high level of IT knowledge.

Without any configuration effort both from the PLC's point of view as well as via its own interface, the D*Bridge routes the relevant data traffic and thus enables horizontal communication.

The D*Bridge increases the performance and security of the network by forwarding only the relevant data packets and discarding unwanted or faulty packets.

Any additional data traffic is blocked, thus stabilizes the network and ensures availability. The D*Bridge has a much higher range of functions than the usual fieldbus couplers.



With the D*Bridge, homogeneous fieldbuses are safely combined into networks. Simple, pragmatic, effective. This is how you create the basis for significant automation gains at the maintenance level.



D*Bridge H

Creates secure, homogeneous convergent network structures for digitalization between fieldbuses on the shopfloor level.

D*Bridge V

Creates the secure connection of the homogeneous convergent network structures for processing of the smart sensor data from the shopfloor directly to the SCADA level.



Indu-Sol GmbH
Blumenstrasse 3
04626 Schmoelln

Phone: +49 (0) 34491 580-0
Fax: +49 (0) 34491 580-499

info@indu-sol.com
www.indu-sol.com

Certified according to DIN EN ISO 9001:2015