

## EMC-INSpektor® V2

### Function

The increasing power density of the industrial production results in a higher risk of interference currents along the cables, on the conducting paths of the power supply and those of the potential equalization systems. The diagnostic tool EMC-INSpektor® V2 allows an automated, contactless and uninterrupted test and detects electromagnetic disturbances temporarily. Up to four current transformers can be connected to the device. The measurement values are recorded separately, evaluated and compared.

EMC disturbances are measured along the fieldbus cable via the 24 VDC power supply, via the 230/400 VAC low-voltage distribution system, in the equipotential bonding system and via the transmitter lines.

### Application

- Parallel inspections of multiple potentially disturbed sections
- Comparison of the data from input source components
- Specific condition evaluation and alerting
- Visual illustration of the disturbance values via web interface
- Export of the measurement data to a USB memory or via LAN interface
- Configuration of the device software via web interface

### Measuring range

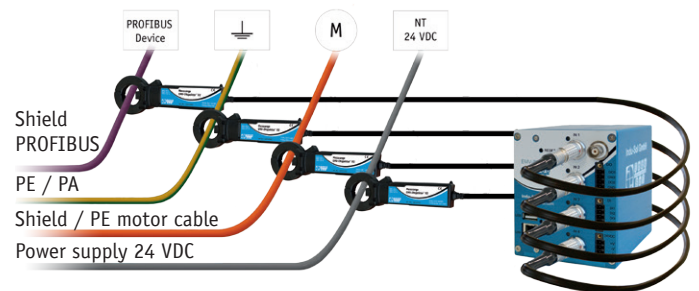
- AC current: 10 mA to 60 A

### Measurement approaches

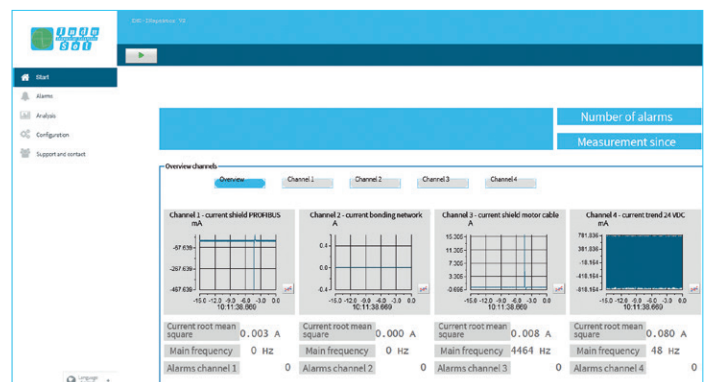
- EMC interferences along the BUS cables
- EMC interferences via the V 24 VDC power supply
- EMC interferences via the 230/400 VAC lowvoltage distribution system
- EMC interferences in the equipotential bonding system
- EMC interferences via the transmitter lines



EMC-INSpektor® V2



Application



Web interface

### Ordering details

EMC-INSpektor® V2

### Art. No.

122010001