

# PROFINET network planning tool PROnetplan



Indu-Sol GmbH – Specialist in Fieldbus Technology



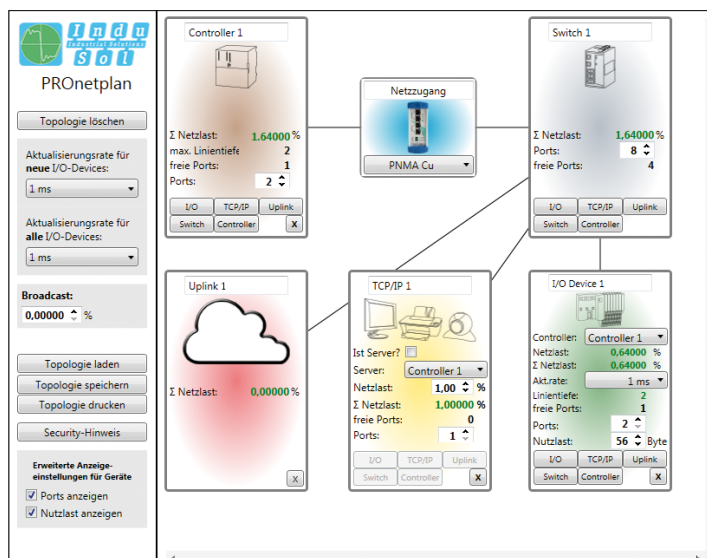
**InduSol America**  
980 Birmingham Rd. Ste 721  
Alpharetta, GA 30004, USA  
+1 (678) 880-6910  
sales@indusolamerica.com  
www.indusolamerica.com

**Mexico**  
Guadalajara, Jalisco, MX  
+52 (55) 8526-6442  
ventas@indusolamerica.com

## A lack of planning causes...



## Planning a network with PROnetplan is the half job



PROnetplan is a software solution to preplan industrial networks. Intuitively the network can be composed graphically. Important parameters like network load, line depth and occupied ports are measured and displayed automatically. A simple simulation shows the estimated network load when changing communication parameters or the network structure.

**Angaben zum Ersteller der Topologie:**  
Logo (150 x 70):   
Planungsbüro: Mustermann  
Planer/Projektbetreuer:   
Freitext 1: www.indu-sol.com  
Freitext 2: Telefon +49 34491 5818-0

**Angaben zur geplanten Anlage:**  
Anlagenbetreiber:   
Anlagenname:   
Netzwerkname:   
Errichten:   
**Druckoptionen:**  
Seitengröße:   
Seitenausrichtung:   
Seitengröße anzeigen:   
Skalieren:

Gerätegruppe	Gerätebezeichnung	Portanzahl	Freie Ports	Nutzlast (Byte)	Erzeugte Netzlast (%)	Anliegende Netzlast (%)	Zugeordneter Controller
Controller	Controller 1	2	1	0	0	7,4	
Switch	Switch 1	8	4	0	0	7,4	
Switch	Switch 2	8	6	0	0	2,56	
Switch	Switch 3	8	5	0	0	4,84	
Uplink	Uplink 1	1	0	0	0	0	
I/O Device	I/O Device 1	2	0	56	0,64	2,56	Controller 1
I/O Device	I/O Device 2	2	0	56	0,64	1,92	Controller 1
I/O Device	I/O Device 3	2	0	56	0,64	1,28	Controller 1
Switch	Switch 4	8	6	0	0	1,92	
I/O Device	I/O Device 5	2	0	56	0,64	1,92	Controller 1
I/O Device	I/O Device 6	2	0	56	0,64	1,28	Controller 1
Portall	Switch 5	8	6	0	0	2,88	
I/O Device	I/O Device 8	2	0	56	0,64	2,88	Controller 1
I/O Device	I/O Device 9	2	0	56	0,64	2,38	Controller 1
I/O Device	I/O Device 4	2	1	56	0,64	0,64	Controller 1
I/O Device	I/O Device 7	2	1	56	0,64	0,64	Controller 1
I/O Device	I/O Device 10	2	0	56	0,64	1,64	Controller 1
IP Gerät	TCP/IP 1	1	0	1	1	1	

### Print function

The comprehensive print function allows to insert your own logo.

### Device list

All devices are displayed in a clear device list.



**Please note:** PI\* recommends network planning explicitly!

According to PROFINET Design Guideline Version 1.04, November 2010

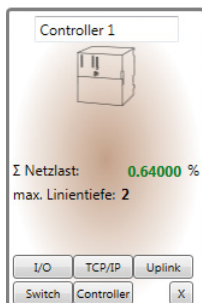
\* PROFIBUS & PROFINET International



**InduSol America**  
980 Birmingham Rd. Ste 721  
Alpharetta, GA 30004, USA  
+1 (678) 880-6910  
sales@indusolamerica.com  
www.indusolamerica.com

**Mexico**  
Guadalajara, Jalisco, MX  
+52 (55) 8526-6442  
ventas@indusolamerica.com

## Plan a PROFINET network ahead

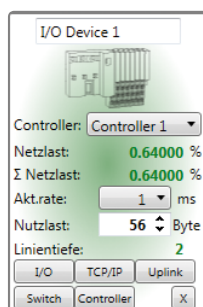


### Network load

PROnetplan displays the arising network load dynamically for every network connection, even for complicated structures and several controllers in the network. Thus possible bottlenecks can be detected.

### Line depth

PROnetplan displays the line depth dynamically for every device, because the communication partner is associated with every device of the network.

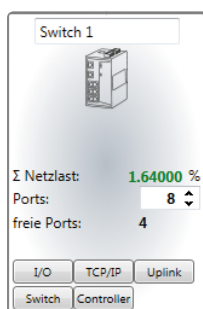


### Refresh rate

You can justify the refresh rate uniformly for all devices or separately. A simple simulation shows the effects of the selected refresh rate on the network load.

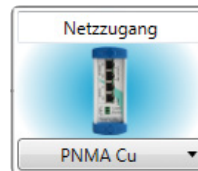
### Live load

The packet size can be justified separately in the extended view.



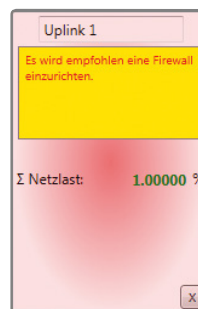
### Available ports

Available ports on switches and devices are displayed.



### Network access

Advices on network access points show already during planning, where these components have to be installed. Hence you have non-reactive network access even during operation. Therefore, please use additionally the PROFINET-INspektor® (Art. No.: 124030000) or the measuring point PNMA Cu (Art. No.: 114090000).



### Security advices

Simple security advices display obviously, which devices provide available ports, furthermore if they have to be blocked or if a firewall has to be used.

## PROnetplan connected with PROscan® Active

By PROscan® Active scanned topology plans can be extended and edited simply with PROnetplan.



### Ordering details

PROnetplan

### Art. No.

114010009