

PROFINET-INspektor® NT

Function

The **PROFINET-INspektor® NT** is a passive data collector that analyzes telegram traffic in PROFINET and Ethernet networks in terms of events like

- Telegram gaps,
- Netload,
- Update time,
- Telegram jitter,
- Telegram repetitions,
- Error frames,
- Device diagnoses and
- Device failures.

This information reflects the current condition of the communication quality in the network concerned and provides the basis for a condition-based maintenance. By storing data in the device, events in the network can be traced and evaluated directly via the display or in detail via the integrated web server.

It is recommended to install the **PROFINET-INspektor® NT** permanently in the network connection between controller and first IO device or switch, since the majority of communication merges typically in this connection.

The active scan function of the **PROFINET-INspektor® NT** offers the user the possibility to capture and document an up-to-date topology plan of a PROFINET/Ethernet network including all important device information at any time. This scan can be evaluated with the **PROscan® Active** software or used cyclically with **PROmanage® NT** for permanent network monitoring (PNM).

Technical data

- Network port
 - PROFINET: 2 x 10/100Base-T RJ45-Ports
 - Webinterface: 2 x 10/100/1000Base-T RJ45-Ports
- Power supply: 24V DC ±10%
- Max. power consumption: 350mA
- Max. power loss: 8,5W
- Dimensions (H x B x T): 123 x 105 x 129mm incl. top-hat rail mounting and connector terminals
- Weight: 0,84 kg
- Casing: aluminium, anodised
- Operating temperature: +5°C bis +55°C
- Storage temperature: -20°C bis +70°C
- Air humidity: 10% bis 90%, non-condensing
- Protection class: IP20
- Mounting: TS35 DIN top-hat rail

Scope of functions

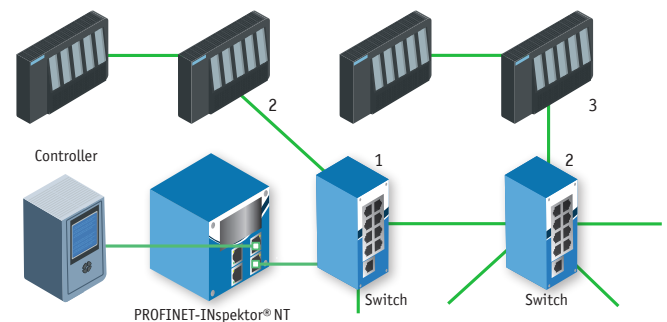
- PROFINET: IRT, RT, RT über UDP/IP
- Alert: Relais, SNMP Trap, E-Mail, TCP Event
- Protocols / Services: HTTP, HTTPS, OPC/UA Client, SNMPv1, SNMPv2, REST-API, DHCP Client, SMTP Client, SNT Client, LLDP
- Network scan including topology
- Acceptance mode

Scope of delivery StarterKIT

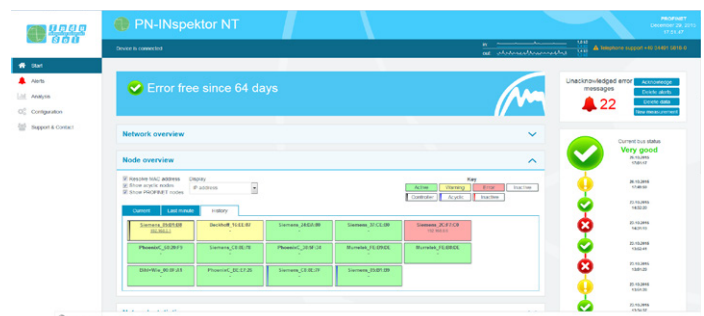
- PROFINET-INspektor® NT
- PROmanage® NT (16 ports)
- Power pack
- Patch cable
- Case and Manual



PROFINET-INspektor® NT



PROFINET-INspektor® NT „Its position in network“



Web interface

Ordering details	Art. No.
PROFINET-INspektor® NT	124030100
PROFINET-INspektor® NT StarterKIT	124030120