

## Network planning software PROnetplan V2

### Features

The **PROnetplan V2** software enables the pre-planning of homogeneous up to convergent industrial networks based on Industrial Ethernet/PROFINET. The creation of the network plan is completely independent of the manufacturers and device types used. PROnetplan V2 is focused on the bandwidth planning of the applications, which can be used in the network. During the simple and intuitive planning process, the user will integrate the following parameters into the software:

- Network structure
- Update time of the cyclic data
- Data throughput of communication relations
- Communication source and sink

From these specified values the user will get the following network parameters, if the communication relations between the devices and the applications have been implemented:

- Data throughput and backplane capacity of the switches
- Network load for each connection
- Number of ports
- Line depth
- Availability

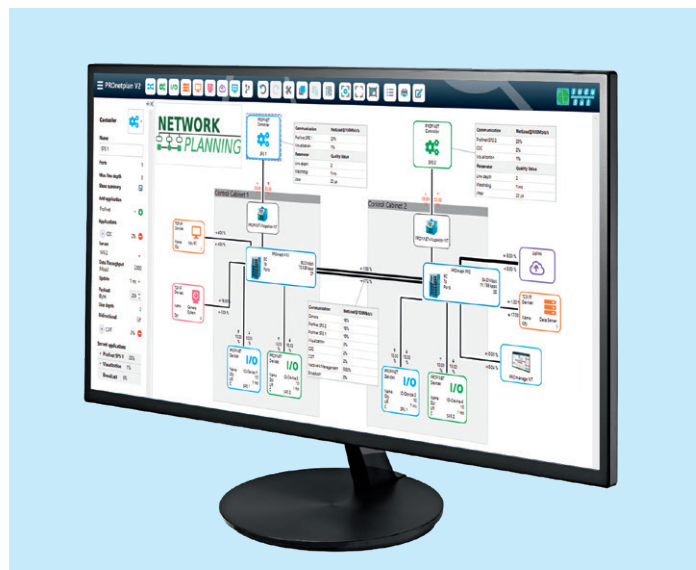
These parameters are used to select the compatible infrastructure components as well as to give hints to revise the network structure. The primary goal is to create a stable network.

### Print function

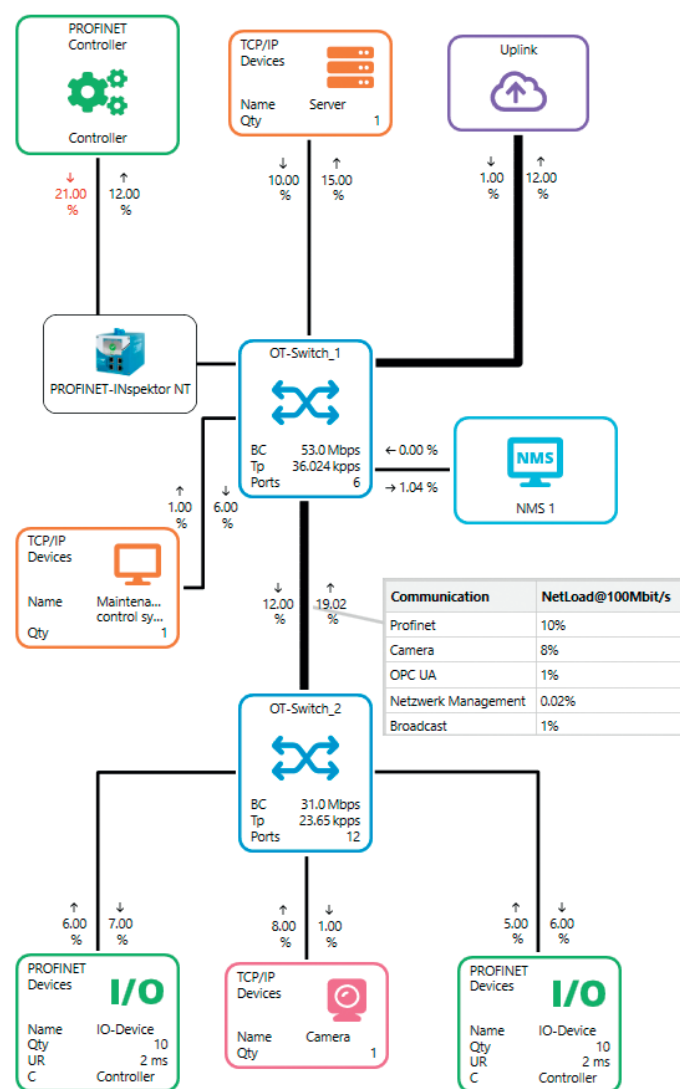
The generated network plan can be extracted as PDF in form of an overview or topology plan. It is possible to personalize the overview plan by adding your own logo, for example.

### System requirements

- Operating system: Microsoft® Windows® Vista, 7, 8, 10
- Hardware requirements: Intel Atom 800MHz or more, 1GB RAM or more, Min. 400MB hard disk space



Network planning software PROnetplan V2



Topology view

### Ordering details

### Art. No.

PROnetplan V2

114010012