

Network management software PROmanage® NT

Function

PROmanage® NT makes it possible for you to analyze and evaluate information on the condition of fieldbus systems and industrial networks and store it on the long haul. The information is transmitted to a central point to provide you an overview. Thus it is possible to get from this central software at any time information on the condition of the controlled fieldbus, incl. Ethernet. PROmanage® NT queries all port statistics of the manageable switches and the results of the decentralised data collector (INSpektors®) at minute intervals to evaluate them and displays them graphically. With this sophisticated analytical technique irregularities can be detected immediately and adjustable thresholds trigger an alarm. Through this statistics function the data are available to the minute up to one year. Thus historic events, such as sporadic failures, can be tracked at any time and used for cause study.

Network data

The user interface is arranged so as to make it easy for the user to find information. It can be tailored to meet your needs and you can use two screens. The graphical display provides a comparison of several parameters and can handle several devices, e.g. you can correlate parameters such as device temperature and device failures of different devices so as to be able to identify the cause of disturbances.

Chronicle

The chronicle of the network provides rapid information which is easy to read on current network status, periods of time in which your network operates free of errors and point in time when disturbances occurred (with time stamp).

Event messages

Integrated management of threshold values allows the user to specify the limiting values for network parameters. As soon as these threshold values are reached, an entry complete with time stamp is written automatically into the event log. Just one click is needed to retrieve network disturbances from the event log.

Alerting

The implemented alarm management System provides automated message forwarding. The user selects the desired medium (email, messaging services, OPC, SNMP) to transfer messages in a timely manner directly to the appropriate area of responsibility, thereby shortening action times and avoiding unnecessary plant breakdowns.

System requirements

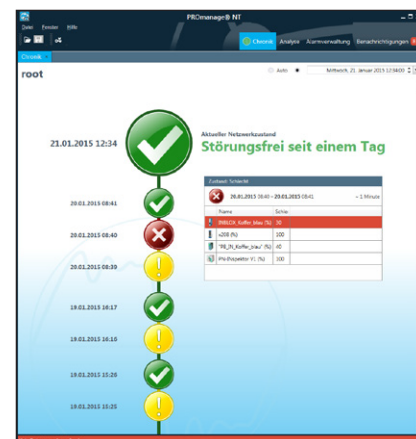
Following operating systems are supported:
 Microsoft® Windows® XP Professional 32 Bit
 Microsoft® Windows® 7 32 Bit / 64 Bit
 Microsoft® Windows® 8, 8.1 64 Bit
 Microsoft® Windows® Server 2008 R2, 2012, 2012 R2

Depending on the number and extent of the attached devices apply to following system requirements:

Licence size	CPU	RAM	Hard disk drive space required
up to 160 Ports	Dual Core (Intel® Core™ i3)	2 GB	50 GB
up to 480 Ports	Dual Core, Quad Core (Intel® Core™ i3, i5)	4 GB	100 GB
up to 960 Ports	Quad Core (Intel® Core™ i5, i7, Intel® Xeon®)	8 GB	200 GB (Server HDD recommended)



Network management software PROmanage® NT



Chronik

Ordering details	Art. No.
PROmanage® NT 80 Ports *	117000032
PROmanage® NT 160 Ports *	117000033
PROmanage® NT 320 Ports *	117000034
PROmanage® NT 480 Ports *	117000035
PROmanage® NT 640 Ports *	117000036
Upgrade PROmanage® V23 to NT	117000040
OPC Server	112010006

Other licences on request.

* The licence defines the maximum number of network Ports or devices retrieved simultaneously. (Ethernet Switch: number of network port = number of licence port, 1 PN-INSpektors® NT= 16 Ports, sonstiger INSpektors® = 8 Ports)