



EtherNet/IP



CAN

DeviceNet



WIRELESS



InduSol America
980 Birmingham Rd. Ste 721
Alpharetta, GA 30004, USA
+1 (678) 880-6910
sales@indusolamerica.com
www.indusolamerica.com

Mexico
Guadalajara, Jalisco, MX
+52 (55) 8526-6442
ventas@indusolamerica.com

EtherNet/IP-INSpektor® analysis and diagnostic tool



The **EtherNet/IP-INSpektor®** is an intelligent, passive measurement and diagnostic tool for temporary or permanent monitoring of EtherNet/IP networks. Due to its passive and feedback-free behavior it is highly suitable for online analysis.

The **EtherNet/IP-INSpektor®** is both a full-featured measuring device for network acceptance and a tool for condition monitoring.

Network parameters – Quality parameters

User-friendly display of network conditions with traffic light colors and time graphs enable any user to respond quickly in an emergency and ensure a good general overview.

All subsequently listed quality parameters are detected as events, evaluated, cached and displayed in a clear overview.

Highlights

- Ease of use, well-structured handling
- Simple evaluation through traffic light function
- Display to show the network status directly
- passive, feedback-free diagnostics

EtherNet/IP-INSpektor®

Device is connected

✓ Error free since 7 days

Network overview

Device overview

Current	Last minute	History		
00:0E:8C:C8:D1:9A pn-pn-coupler-1 17.2%	00:1B:1C:CA:44 ab22 1.1%	00:1B:1B:24:DA:80 m153-4pn-1 7.6%	00:0F:9E:FE:B8:DE cube23s-1 1.1%	00:AD:45:38:5F:34 s55-pn-bk 102.8%
00:0E:8C:C8:D1:97 pn-pn-coupler 9.2%	00:1B:1B:58:5E:A2 m151-3pn-gs 1.0%	00:0E:F0:46:36:79 reba-cpx 17.4%	00:1B:1B:D1:EC:8C IE-PE-Link 2.5%	00:0F:9E:FE:B8:DE cube23s 5.0%
28:63:36:65:87:1A ecl20w 4.1%	00:AD:45:94:85:1D m-pn-020 75.9%	00:19:31:98:C3:46 mepw021022015 10.1%	00:06:77:02:31:0A s3000 6.4%	00:19:31:31:A5:90 mepw021022015-1 25.2%
54:4A:05:02:2B:E1 veinglar-switch 10.3%	24:EA:49:20:01:76 m160bc-pn-01w02 53.4%	50:61:D6:00:60:4D promesh-p0-1 0.1%	00:1B:1B:3A:EC:7E scaleance-x200 -	00:AD:45:BE:E7:26 s-switch-ghs -

Clear, detailed device overview with selection of each network parameter

REDUCE MACHINE DOWNTIME



EtherNet/IP



CAN

DeviceNet



WIRELESS

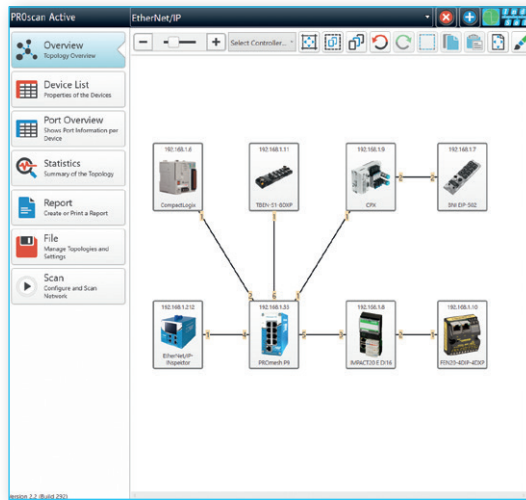


InduSol America
980 Birmingham Rd. Ste 721
Alpharetta, GA 30004, USA
+1 (678) 880-6910
sales@indusolamerica.com
www.indusolamerica.com

Mexico
Guadalajara, Jalisco, MX
+52 (55) 8526-6442
ventas@indusolamerica.com

Acceptance Test & validation software PROscan® Active V2

With the software **PROscan® Active V2** Ethernet based networks can be specified and graphically displayed during running operation (online). The software helps to organize a complex network efficiently and allows to perform possibly necessary maintenance activities prompt and purposeful. In the sense of plant-assetmanagement each device is displayed and specified with all important parameters and features.



Highlights

- Easy to use
- Diagnosis mode
- Acceptance report
- Plant-asset-management
- Extensive print and export function
- Collection of all important device information, incl. port statistics
- Qualified for EtherNet/IP- and Ethernet networks

PROmanage® NT network monitoring software

PROmanage® NT enables the evaluation, analysis and long-term storage of condition data of your fieldbuses and industrial networks. The information is transmitted to a central point to provide you a clear overview.

Highlights

- Central monitoring of all EtherNet/IP components and networks
- Avoid system failures
- Timely warning via OPC, SNMP trap or email in case of irregularities
- Data exact to the minute available up to one year
- Quick installation
- Easy device set-up due to automatic and manual device scan



Ordering Details

Ordering Details	Art. No.
EtherNet/IP-INspektor®	124090000
PROscan® Active V2 (Basis license*)	117000053
PROmanage® NT (80 License ports*)	117000032

*Further licences upon request