



EtherNet/IP



CAN

DeviceNet



WIRELESS



Indu-Sol GmbH
Blumenstrasse 3
04626 Schmoelln

Telephone:
+49 (0) 34491 5818-0
Telefax:
+49 (0) 34491 5818-99

Email:
info@indu-sol.com
Homepage:
www.indu-sol.com

EtherNet/IP-INSpektor® analysis and diagnostic tool



The **EtherNet/IP-INSpektor®** is an intelligent, passive measurement and diagnostic tool for temporary or permanent monitoring of EtherNet/IP networks. Due to its passive and feedback-free behavior it is highly suitable for online analysis.

The **EtherNet/IP-INSpektor®** is both a full-featured measuring device for network acceptance and a tool for condition monitoring.

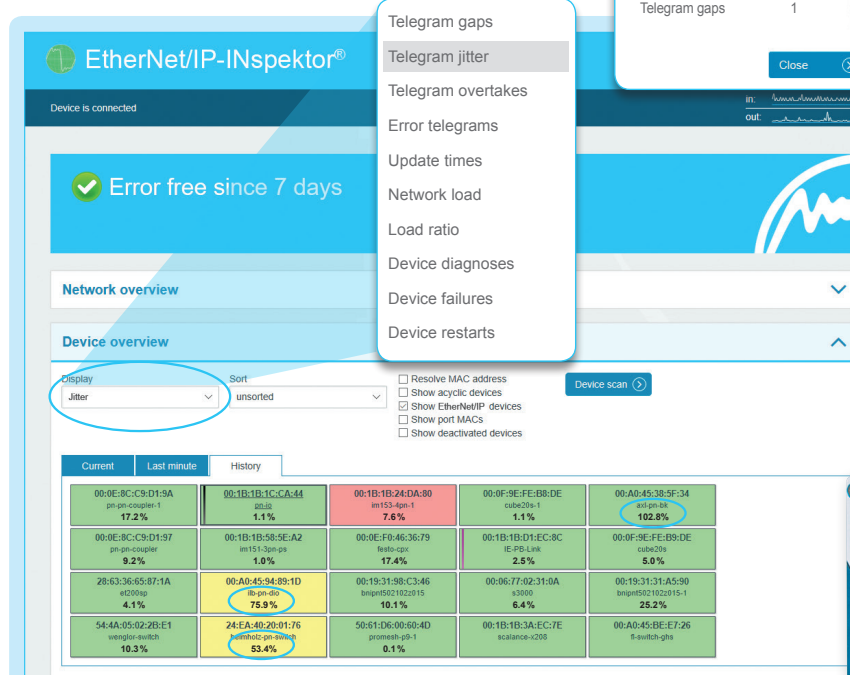
Highlights

- Ease of use, well-structured handling
- Simple evaluation through traffic light function
- Display to show the network status directly
- passive, feedback-free diagnostics

Network parameters – Quality parameters

User-friendly display of network conditions with traffic light colors and time graphs enable any user to respond quickly in an emergency and ensure a good general overview.

All subsequently listed quality parameters are detected as events, evaluated, cached and displayed in a clear overview.



Clear, detailed device overview with selection of each network parameter





EtherNet/IP



CAN

DeviceNet



WIRELESS



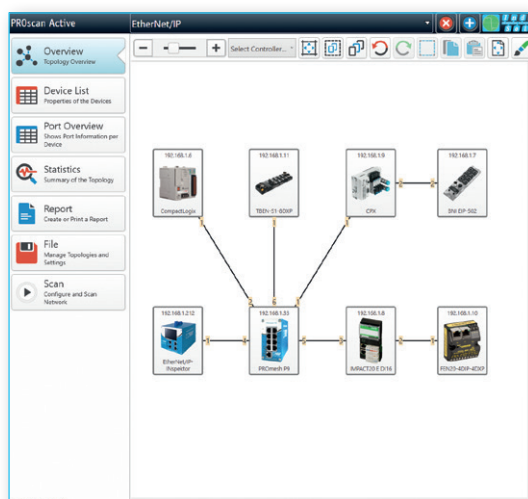
Indu-Sol GmbH
Blumenstrasse 3
04626 Schmoelln

Telephone:
+49 (0) 34491 5818-0
Telefax:
+49 (0) 34491 5818-99

Email:
info@indu-sol.com
Homepage:
www.indu-sol.com

Acceptance Test & validation software PROscan® Active V2

With the software **PROscan® Active V2** Ethernet based networks can be specified and graphically displayed during running operation (online). The software helps to organize a complex network efficiently and allows to perform possibly necessary maintenance activities prompt and purposeful. In the sense of plant-assetmanagement each device is displayed and specified with all important parameters and features.



Highlights

- Easy to use
- Diagnosis mode
- Acceptance report
- Plant-asset-management
- Extensive print and export function
- Collection of all important device information, incl. port statistics
- Qualified for EtherNet/IP- and Ethernet networks

PROmanage® NT network monitoring software

PROmanage® NT enables the evaluation, analysis and long-term storage of condition data of your fieldbuses and industrial networks. The information is transmitted to a central point to provide you a clear overview.

Highlights

- Central monitoring of all EtherNet/IP components and networks
- Avoid system failures
- Timely warning via OPC, SNMP trap or email in case of irregularities
- Data exact to the minute available up to one year
- Quick installation
- Easy device set-up due to automatic and manual device scan



Ordering Details

Ordering Details	Art. No.
EtherNet/IP-INSpektor®	124090000
PROscan® Active V2 (Basis license*)	117000053
PROmanage® NT (80 License ports*)	117000032

*Further licences upon request