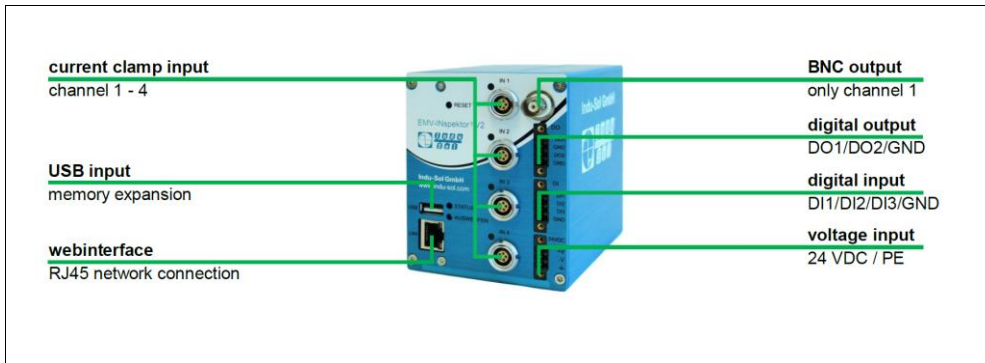


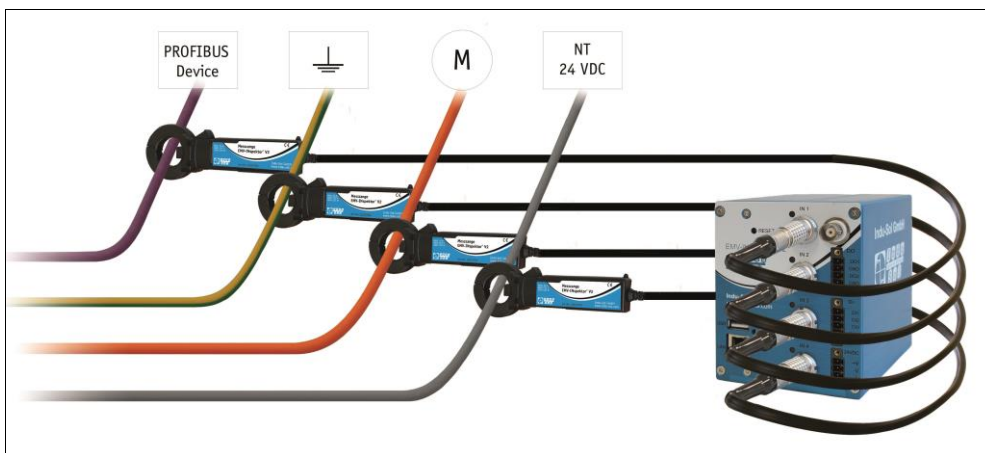
Connecting the EMC-INspektor® V2:

The illustration below shows the connection diagram for the EMC-INspektor® V2.



Step 1:

Before connecting the EMC-INspektor® V2 to the voltage supply, first establish the connection of the EMC-INspektor® V2 to the measuring clamp adapters. To do so, insert the connector of each measuring clamp adapter into one of the free clamp ports. To disconnect the connectors, simply pull at the integrated push-pull mechanism to release the lock.



Step 2:

Now supply the EMC-INspektor® V2 with the required 24 V DC voltage. Please note the polarity during this process. The terminal labelled with the earth symbol can be used as protective earth. The EMC-INspektor® V2 starts, and begins independently with the analysis of the detected currents.

Step 3:

Use a common Ethernet cable (not included in scope of supply) to establish a network connection between a PC or laptop, and the "LAN" Web interface port of the EMC-INspektor® V2. The Web interface port allows both the evaluation of the recorded data, and the parametrisation of the device.

The EMC-INspektor® V2 is supplied with the following factory-set network configuration:

IP address: 192.168.212.212
Subnet mask: 255.255.255.0

In this regard, and for a fault-free connection, check the network settings of your PC: (example)

- IP address PC: 192.168.212.20
- Subnet mask PC: 255.255.255.0

Quick Start Instructions – EMC-INspektor® V2



Step 4:

A Web-server function is integrated for access to the EMC-INspektor® V2, which can be opened with an appropriate standard browser (e.g. Microsoft Internet Explorer from version 10 or Mozilla Firefox from version 11; JavaScript must be activated).

To do this, open your browser, and in the command line, enter the IP address of the EMC-INspektor® V2 (default: 192.168.212.212).

Step 5:


After opening the EMC-INspektor® V2, you will see, by default, an overview of all the channels. All aspects of operation or configuration are generally arranged according to the different user categories.

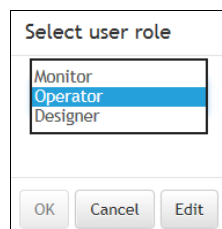


After opening the EMC-INspektor V2 Web interface, you are automatically registered as an "Operator" user.

The following three user roles, each with different rights, are generally available for operating the various functions:

- Monitor: Read, but no Write permission
- Operator: Read & Write permission; configuration of all parameters
- Designer: same as Operator, plus: Adjustments to system variables and to Web interface (password-protected; adjustments only by Indu-Sol GmbH)

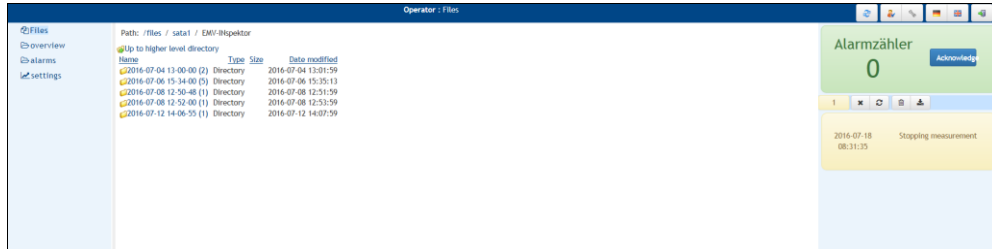
Switching between the user categories is done via the "User Button"  on the top navigation bar.



Step 6:

After your automatic registration as an Operator user, the following options for operation are made available on the left screen edge: Files, Overview, Alarms & Settings.

- **Files:** Contains all data records saved under the path "files/sata1/EMV INspektor"



This page of the Web interface contains a list of all the saved measurement data, in chronological order. Here you can download and/or open existing data records. You can delete individual measurement data or entire folders by a right-click.

- **Overview:** Contains specific overviews on the channels (time/frequency range)

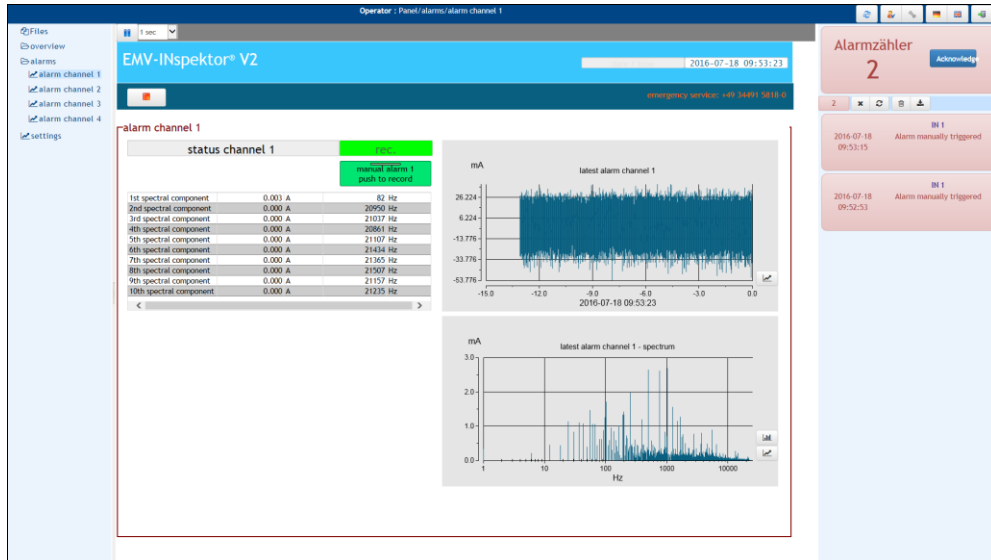


The "channel overview" provides information on the present current course, the corresponding effective value, the main frequency, and the number of alarms for each channel.

The "Spectra Overview" link takes you to a similar page; the only difference is that instead of the current course over the time range, you can see the corresponding frequency spectrum.

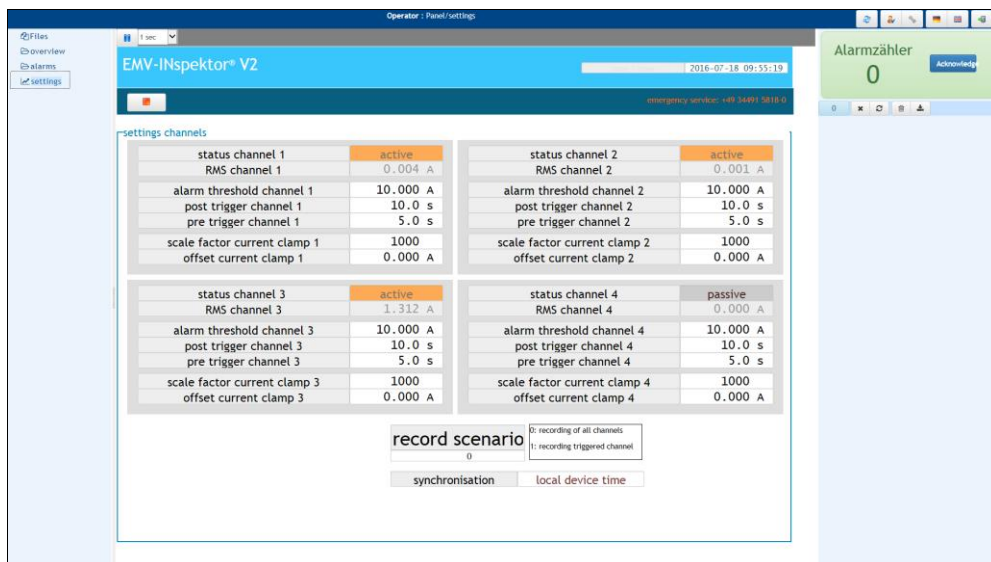
More detailed information, and options for channel configuration, are found on the channel-specific pages, e.g. "overview channel 1".

- **Alarms:** Contains a channel-specific alarm management (alarm threshold configuration, scaling factor of current transformers)



The alarm overview first displays the data record that was last saved (current course & frequency spectrum per channel), provided that a previously set trigger was fired. In addition, the corresponding current and frequency values of the 10 largest spectral components are listed as a table. The "manual alarm" button allows spontaneous recording of current actual values (e.g. for documentation purposes).

- **Settings:** Contains the channel-specific alarm management, and additional configuration options for the individual channels.



The Settings page gives a clear overview of current values and adjustable parameters.

The current values include:

- **Status Channel X:** **passive** – No measuring clamp connected
active – Measuring clamp connected, and monitoring active
Recording – Measuring data are being captured
Alarm – Pre-set alarm threshold has been exceeded
- **RMS Channel X:** Displays the respective current value of the detected current
- **Record Scenario:** 0 = One channel triggers all channels; 1 = Triggering by individual channel
- **Synchronisation:** Indicates whether the NTP time signal or the local device time is active

Quick Start Instructions – EMC-INspektor® V2



Adjustable parameters include:

- Alarm Threshold Channel X: Specifies the RMS value at which the recording will start
- Post-Trigger Channel X: Follow-up time after completion of the trigger, in seconds
- Pre-Trigger Channel X: Recording time before firing of the trigger, in seconds
- Scaling Factor Current Transformer X: Scaling of current transformers
- Offset Current Transformer X: Scaling of current transformers

Overview of all passwords:

Web interface registration:	emfa
User Designer:	indusol

One of our service engineers will be happy to assist you in the event of any queries. Please call or email:

+1 (678) 880-6910
support@indusolamerica.com